

**PUMP INFORMATION**

- Type:  Sump Pump(s)  
 Grinder Pump(s)  
 Non-Clog Pump(s)

Model NO: \_\_\_\_\_  
 Rating: \_\_\_\_\_ GPM \_\_\_\_\_ TDH  
 Motor: \_\_\_\_\_ HP \_\_\_\_\_ RPM  
 Elec: \_\_\_\_\_ PH \_\_\_\_\_ HZ \_\_\_\_\_ v  
 Elec: \_\_\_\_\_ FL AMPS

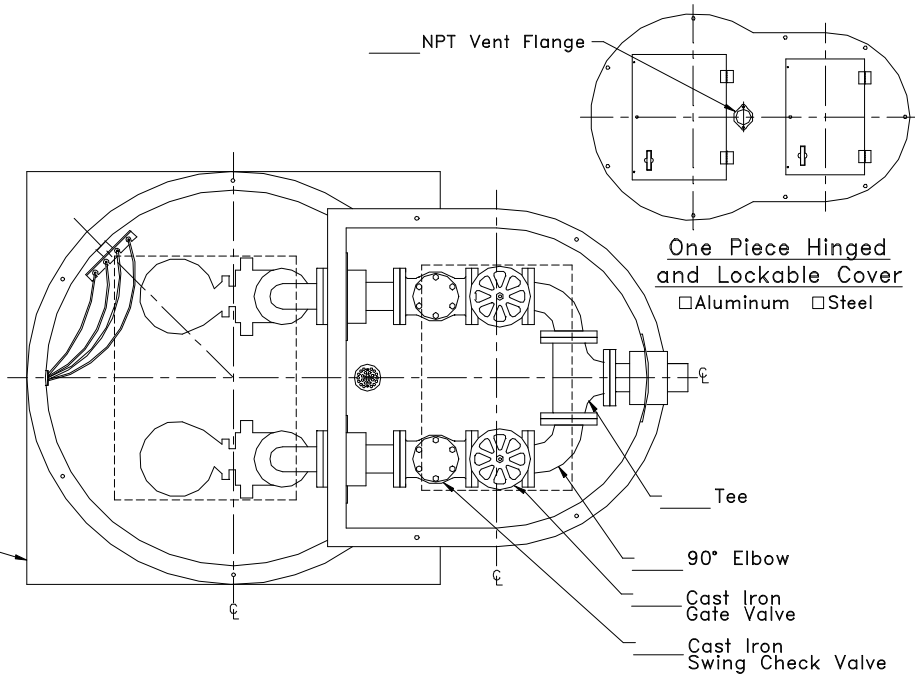
**DISCHARGE PIPE**

- Sch40 Galvanized Steel  
 Sch80 PVC  
 Ductile Iron  
 3"  
 4"

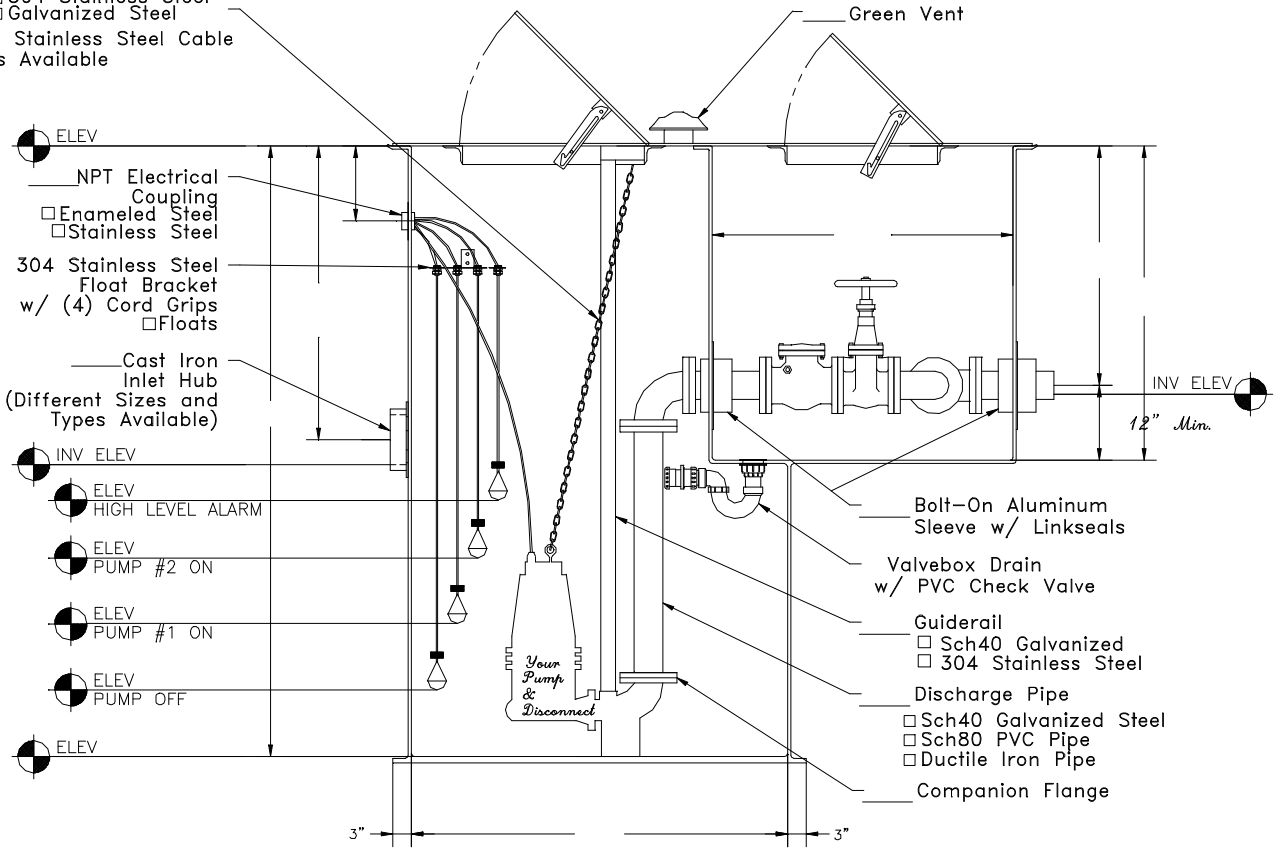
Anti-Floatation Flange  
 Fiberglass Encapsulated  
 ASTM A-36 Steel

- 3/16" Lifting Chain  
 304 Stainless Steel  
 Galvanized Steel  
 \* Stainless Steel Cable  
 is Available

- NPT Electrical Coupling  
 Enameled Steel  
 Stainless Steel  
 304 Stainless Steel Float Bracket  
 w/ (4) Cord Grips  
 Floats  
 Cast Iron Inlet Hub  
 (Different Sizes and Types Available)  
 INV ELEV  
 ELEV HIGH LEVEL ALARM  
 ELEV PUMP #2 ON  
 ELEV PUMP #1 ON  
 ELEV PUMP OFF  
 ELEV



**One Piece Hinged and Lockable Cover**  
 Aluminum  Steel



Prefabricated Fiberglass Duplex Lift Station  
 Reference: Flanged Duplex with Flatwall Valvebox  
 Highway 25 North P.O. Box 420  
 Rochester, IN 46975  
 Phone: 800/354-4534 Fax: 574/223-6106

Scale: None  
 Drawn By: RM  
 App'd By:  
 Date: 05/19/03

This print is and contains confidential proprietary information owned exclusively by TOPP INDUSTRIES, INC. It is furnished on a strictly confidential basis. This restriction includes, but is not limited to the condition that this print will not only be used as a record or to identify or inspect parts or for other information purposes and will not be used to manufacture or prepare the manufacture of the items shown in this print by any other source than TOPP INDUSTRIES, INC.

Supersedes Prints  
 Prior To: 05/19/03

Reference No: 11088

Revisions	
Ⓐ	First Released.