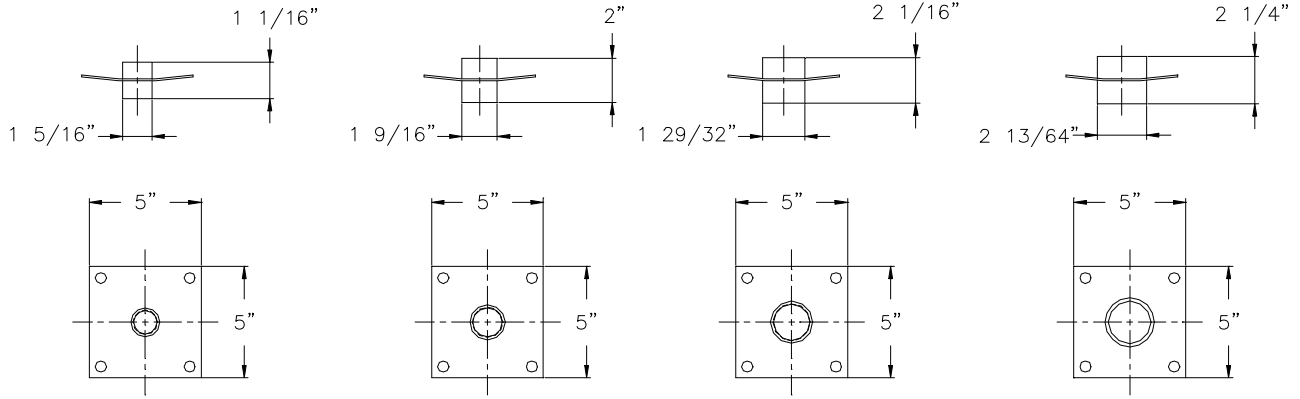


STAINLESS STEEL AND INDUSTRIAL ENAMEL COATED PIPE SEALING COUPLINGS

3/8-16 x 1 1/4" STAINLESS STEEL BOLTS, WASHERS, NUTS AND
3/4"x1/4" CLOSED CELL FOAM ADHESIVE GASKET MATERIAL
PROVIDED WITH EACH COUPLING KIT.

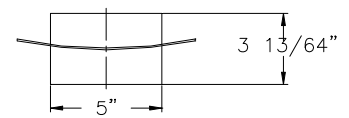
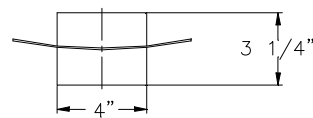
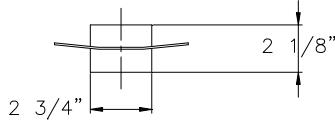


3/4" FPT PIPE COUPLING
PART NO.
C075E- ENAMELED STEEL
C075S- STAINLESS STEEL

1" FPT PIPE COUPLING
PART NO.
C100E- ENAMELED STEEL
C100S- STAINLESS STEEL

1 1/4" FPT PIPE COUPLING
PART NO.
C125E- ENAMELED STEEL
C125S- STAINLESS STEEL

1 1/2" FPT PIPE COUPLING
PART NO.
C150E- ENAMELED STEEL
C150S- STAINLESS STEEL



2" FPT PIPE COUPLING
PART NO.
C200E- ENAMELED STEEL
C200S- STAINLESS STEEL

3" FPT PIPE COUPLING
PART NO.
C300E- ENAMELED STEEL
C300S- STAINLESS STEEL

4" FPT PIPE COUPLING
PART NO.
C400E- ENAMELED STEEL
C400S- STAINLESS STEEL

INSTALLATION INSTRUCTIONS

1. LOCATE PIPE OR COUPLING CENTER.
2. CUT HOLE TO THE OUTSIDE DIAMETER OF THE COUPLING.
3. APPLY GASKET TO COUPLING OR BASIN.
4. PLACE COUPLING AND DRILL HOLES FOR BOLTS.
5. INSERT BOLTS, WASHERS, NUTS AND TIGHTEN.
6. DOPE THREADS AND INSERT PIPE.

TOPP
INDUSTRIES
INCORPORATED

PIPE COUPLINGS
Reference: -
Highway 25 North P.O. Box 420
Rochester, IN 46975
Phone: 800/354-4534 Fax: 874/223-6106

Scale: None
Drawn By: RM
App'd By: .
Date: 07/08/03

Supersedes Prints
Prior To: 07/08/03

This print is and contains confidential proprietary information owned exclusively by TOPP INDUSTRIES, INC. It is furnished on a strictly confidential basis. This restriction includes, but is not limited to the condition that this print will not only be used as a record or to identify or inspect parts or for other information purposes and will not be used to manufacture or procure the manufacture of the items shown in this print by any other source than TOPP INDUSTRIES, INC.

Reference No: 10095

Revisions

① First Released 06/27/03