

**PUMP INFORMATION**

- Type:  Sump Pump(s)  
 Grinder Pump(s)  
 Non-Clog Pump(s)

Model NO.: \_\_\_\_\_

Rating: \_\_\_\_\_ GPM \_\_\_\_\_ TDH

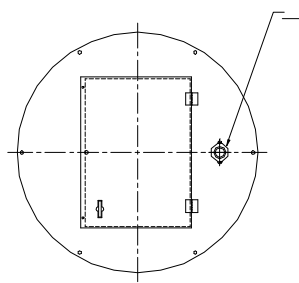
Motor: \_\_\_\_\_ HP \_\_\_\_\_ RPM

Elec: \_\_\_\_\_ PH \_\_\_\_\_ HZ \_\_\_\_\_ v

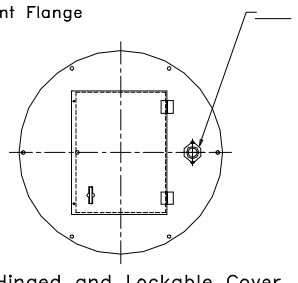
Elec: \_\_\_\_\_ FL AMPS

**DISCHARGE PIPE**

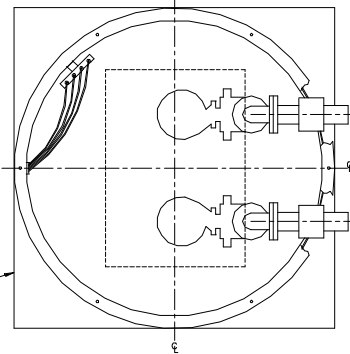
- Sch40 Galvanized  
 Sch80 PVC  
 Ductile Iron  
 3"  
 4"  
 6"



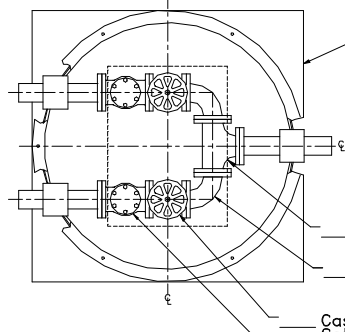
Hinged and Lockable Cover  
 Fiberglass  Aluminum  Steel



Hinged and Lockable Cover  
 Fiberglass  Aluminum  Steel

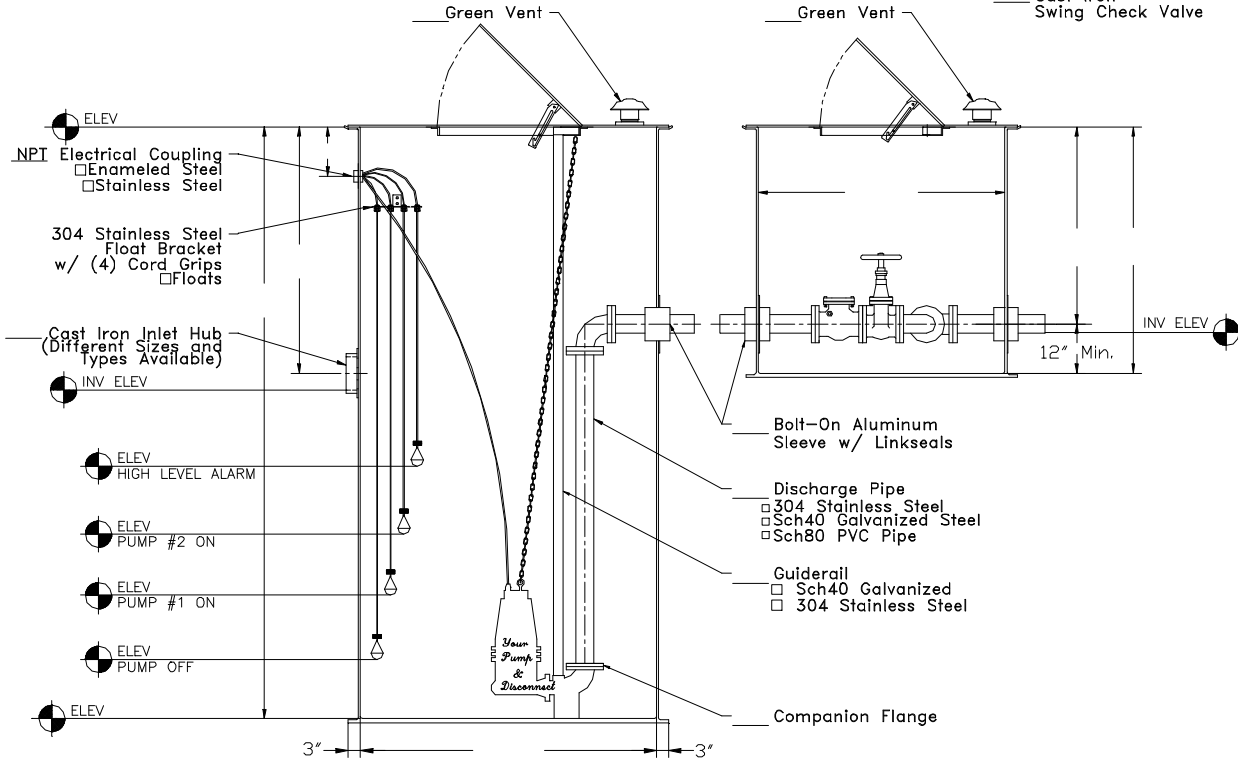


- Anti-Floatation Flange  
 Fiberglass Encapsulated  
 ASTM A-36 Steel  
 Round Fiberglass  
 None



- Anti-Floatation Flange  
 Fiberglass Encapsulated  
 ASTM A-36 Steel  
 Round Fiberglass  
 None

- Tee  
 90° Elbow  
 Cast Iron Gate Valve  
 Cast Iron Swing Check Valve



- ELEV  
 NPT Electrical Coupling  
 Enameled Steel  
 Stainless Steel  
 304 Stainless Steel Float Bracket w/ (4) Cord Grips  
 Floats  
 Cast Iron Inlet Hub (Different Sizes and Types Available)  
 INV ELEV  
 ELEV HIGH LEVEL ALARM  
 ELEV PUMP #2 ON  
 ELEV PUMP #1 ON  
 ELEV PUMP OFF  
 ELEV

- Green Vent  
 Bolt-On Aluminum Sleeve w/ Linkseals  
 Discharge Pipe  
 304 Stainless Steel  
 Sch40 Galvanized Steel  
 Sch80 PVC Pipe  
 Guiderail  
 Sch40 Galvanized  
 304 Stainless Steel  
 Companion Flange



Prefabricated Fiberglass Duplex Lift Station

Scale: None  
 Drawn By: RM  
 Appv'd By: .  
 Date: 03/02/04

Reference: Flanged Duplex With Unattached Valvebox

Highway 25 North P.O. Box 420  
 Rochester, IN 46975  
 Phone: 800/354-4534 Fax: 574/223-6106

Supersedes Prints  
 Prior To: 03/02/04

Reference No: 17512

This print and contains confidential proprietary information owned exclusively by TOPP INDUSTRIES, INC. It is furnished on a strictly confidential basis. This restriction includes, but is not limited to the condition that this print will not only be used as a record or to identify or inspect parts or for other information purposes and will not be used to manufacture or procure the manufacture of the items shown in this print by any other source than TOPP INDUSTRIES, INC.

Revisions

(A)	First Released.