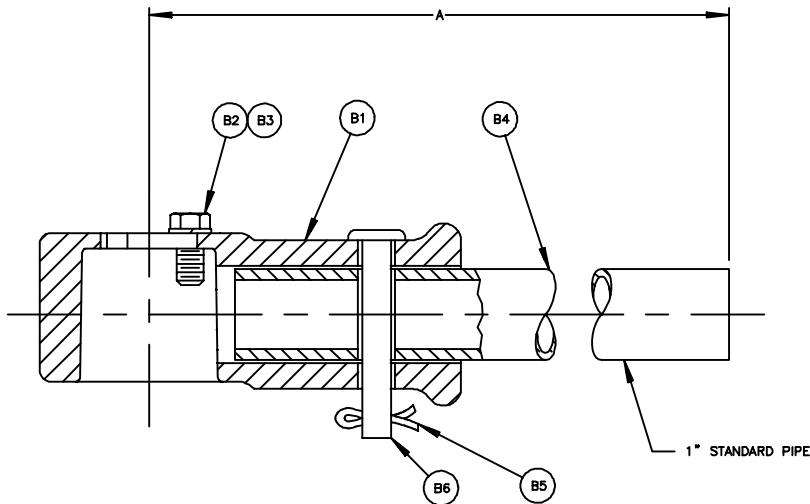
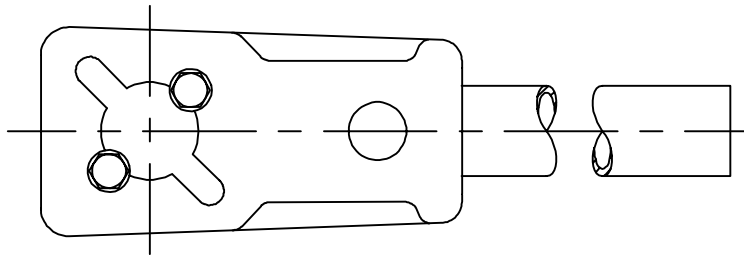


VALVE SIZE	MAX SHUT-OFF PRESSURE DROP (PSI)	DIM
		A
3.5 4	125	14.75 375
		22.50 571
4.5 5 6	25	29.50 749
	75	32.75 832
	100	29.50 749
6.5 8	25	32.75 832
	75	43.25 1099
	100	

NO	PART NAME	QTY
B1	WRENCH	1
B2	SCREW	2
B3	LOCKWASHER	2
B4	HANDLE	1
B5	COTTER PIN	1
B6	CLEVIS PIN	1

NOTE:

- WHEN ORDERING PARTS, SPECIFY VALVE SIZE AND MODEL NUMBER FROM DATA PLATE, GIVE DRAWING NUMBER WITH PART NAME, ITEM NUMBER AND QUANTITY.
- DIMENSIONS SHOWN IN $\frac{\text{INCHES}}{\text{MILLIMETERS}}$ UNLESS OTHERWISE INDICATED.



1	2	3	4	5	6	7	8	9	10	11	12	13	14	15	16	17	18	19	20

DeZURIK

SARTELL, MINNESOTA, U.S.A. 56377
 CAMBRIDGE, ONTARIO, CANADA
 SUNBURY, VICTORIA, AUSTRALIA
 CRAMLINGTON, ENGLAND

LV WRENCH FOR USE WITH
 3.5 - 8 ECCENTRIC VALVES

DOCT. CODE	DRAWN	APPROVED	DATE
C1	CHECKED RJP	BOOS	10-30-81

A-22563