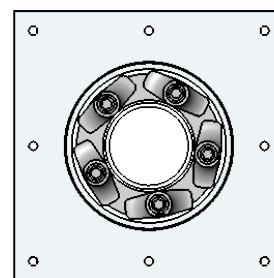
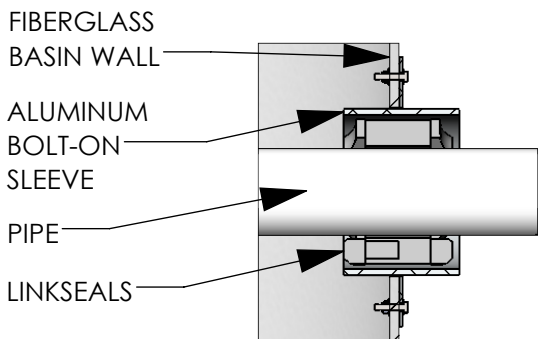


LINKSEAL

LINKSEAL IS RATED AT 20 PSIG (40 FEET OF HEAD), WHICH EXCEEDS THE PERFORMANCE REQUIREMENTS OF MOST APPLICATIONS.

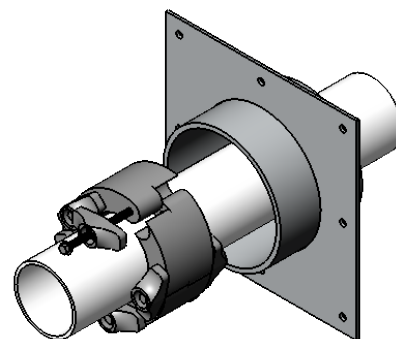
1. Measure and mark correct mounting depth on basin wall.
2. Cut hole to the outside diameter of the sleeve with a holesaw or saw zall (with rim grit blade).
3. Insert sleeve into hole and use as template to drill holes for bolts.
4. Remove the sleeve and apply a generous amount of gasket material around basin side of plate spiraling toward the outside of the plate. Also, apply gasket material around bolt hole openings on plate.
5. Insert sleeve into hole and bolt in place.
6. Wrap linkseals around pipe - make sure bolt heads are facing to the interior of the basin.
7. Connect the first and last linkseal together.
8. Slide loose linkseals between pipe and sleeve.
9. Tighten bolts around linkseals one at a time.



STANDARD DIAMETER SCH40 STEEL & SCH80 PVC PIPE				
NOMINAL PIPE SIZE	ACTUAL PIPE SIZE	SLEEVE	LINKSEAL MODEL NO.	NO. OF LINKS PER SEAL
1/2	.840	2	LS-200-C	4
3/4	1.050	2	LS-200-C	4
1	1.315	3	LS-300-C	4
1 1/4	1.66	4	LS-340-C	5
1 1/2	1.90	3	LS-200-C	6
2	2.375	4	LS-300-C	6
2 1/2	2.875	4	LS-200-C	9
3	3.500	6	LS-340-C	9
4	4.500	6	LS-300-C	10
5	5.563	8	LS-425-C	6
6	6.625	10	LS-400-C	7
8	8.625	12	LS-475-C	12
10	10.750	14	LS-400-C	10
12	12.750	16	LS-400-C	12
14	14.000	18	LS-440-C	13
16	16.000	20	LS-400-C	15
18	18.000	22	LS-400-C	17
20	20.000	24	LS-400-C	18

STANDARD DIAMETER SDR35 PVC PIPE				
NOMINAL PIPE SIZE	ACTUAL PIPE SIZE	SLEEVE	LINKSEAL MODEL NO.	NO. OF LINKS PER SEAL
4	4.22	6	LS-315	10
6	6.28	10	LS-410	10
8	8.40	12	LS-475	12
10	10.50	14	LS-475	14
12	12.50	16	LS-425	12

STANDARD DIAMETER DUCTILE IRON PIPE				
NOMINAL PIPE SIZE	ACTUAL PIPE SIZE	SLEEVE	LINKSEAL MODEL NO.	NO. OF LINKS PER SEAL
2	2.500	4	LS-300-C	6
2 1/4	2.750	5	LS-325-C	4
3	3.960	6	LS-325-C	5
4	4.800	8	LS-400-C	5
6	6.900	10	LS-400-C	7
8	9.050	12	LS-475-C	12
10	11.100	14	LS-400-C	11
12	13.200	16	LS-360-C	21
14	15.300	18	LS-360-C	24
16	17.400	22	LS-400-C	16
18	19.500	24	LS-400-C	18
20	21.600	25	LS-400-C	20



CUSTOMER:

PO: SO:

PUMP & DISCONNECT:

MATERIAL:

PROPRIETARY AND CONFIDENTIAL

THE INFORMATION CONTAINED IN THIS DRAWING IS THE SOLE PROPERTY OF <INSERT COMPANY NAME HERE>. ANY REPRODUCTION IN PART OR AS A WHOLE WITHOUT THE WRITTEN PERMISSION OF <INSERT COMPANY NAME HERE> IS PROHIBITED.

DRAWN

GH

CHECKED

GH

ENG APPR.

DATE

02/11/2020

02/14/2020

DIMENSIONS ARE IN INCHES
TOLERANCES:
FRACTIONAL: ±
ANGULAR: MACH ± BEND ±
TWO PLACE DECIMAL ±
THREE PLACE DECIMAL ±

MATERIAL:

TOPP INDUSTRIES, INC.
P.O. BOX 420 ^ HWY. 25 N.
ROCHESTER, IN. 46975
(800) 354-4534 FAX: (574) 223-6106

REF:



SIZE **A**

DWG. NO.

LINKSEAL

02

WEIGHT:

SHEET 1 OF 1