



Rod R. Blagojevich, Governor  
Eric E. Whitaker, M.D., M.P.H., Director

525-535 West Jefferson Street • Springfield, Illinois 62761-0001 • [www.idph.state.il.us](http://www.idph.state.il.us)

June 13, 2006

Topp Industries, Inc.  
P.O. Box 420  
Rochester, IN 46975

**RE: Inlet Hub To Fit Polyethylene Sump and Sewage Basins**

The Department has received your correspondence and literature in regards to TI Inlet Connection, and offer the following:

The Department has reviewed the literature you provided, and shall approve the TI Inlet Connection for use in the State of Illinois.

If you have any questions or concerns regarding this matter, please contact the Illinois Department of Public Health, Attn: Plumbing Program, 828 S. Second Street, Springfield, Illinois 62704, telephone (217) 524-0791.

Sincerely,

  
J. Ted Buecker  
Plumbing Program Manager

***improving public health, one community at a time***

*printed on recycled paper*

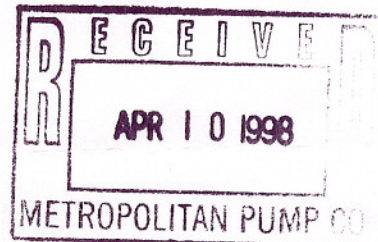
Illinois Department of  
**Public  
Health**

Jim Edgar, Governor • John R. Lumpkin, M.D., M.P.H., Director

525-535 West Jefferson Street • Springfield, Illinois 62761-0001

April 6, 1998

John Kochan, Jr.  
Metropolitan Industries, Inc.  
37 Forestwood Drive  
Romeoville, IL 60446



Dear Mr. Kochan:

In response to our previous telephone conversations and written material submitted by you regarding a rubber grommet and a molded insert placed on a sewage basin so that incoming pipe will not penetrate the basin has been evaluated by some Department personnel and some members of the Plumbing Code Advisory Board.

It appears that your design will be acceptable and we request that any rubber grommet used have the brand name, catalog number or serial number and the A.S.T.M. Standard that applies.

Sincerely,

Dean Thady, Chief Plumbing Inspector  
Office of Health Protection

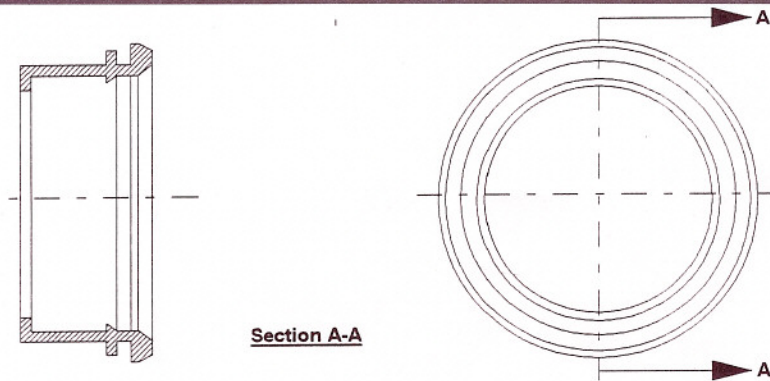
DT:bw



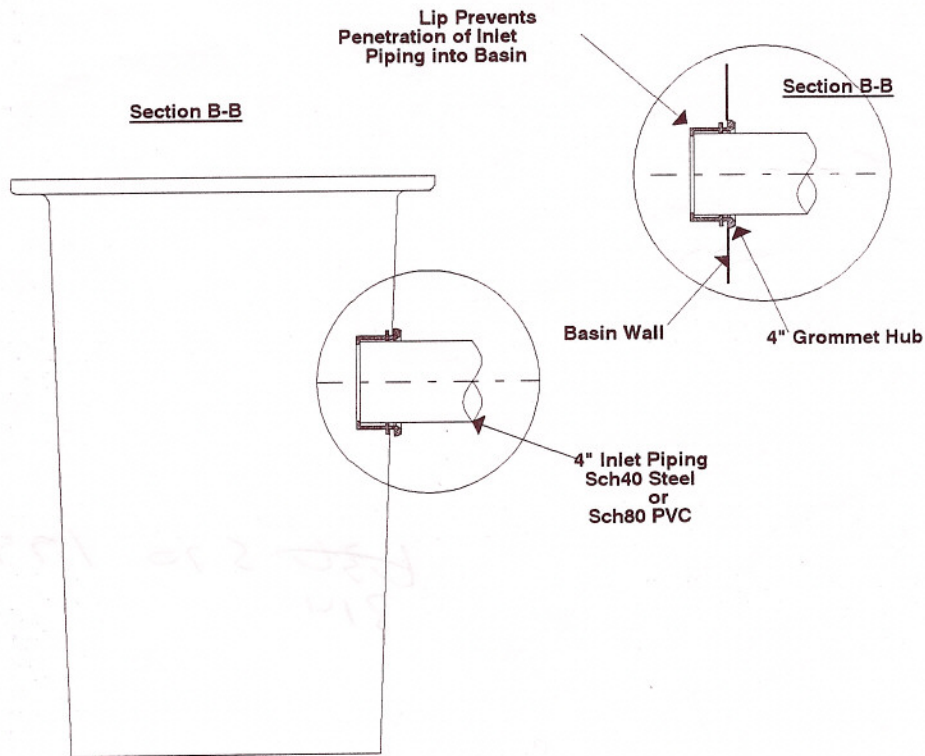


# TOPP INDUSTRIES, INC.

P.O. BOX 420 • 420 N. STATE ROAD 25  
ROCHESTER, IN 46975



**Section A-A**



**Section B-B**

Lip Prevents Penetration of Inlet Piping into Basin

**Section B-B**

Basin Wall

4" Grommet Hub

4" Inlet Piping  
Sch40 Steel  
or  
Sch80 PVC

**Part Number : H400R**  
4" Rubber Grommet Hub

The 4" Rubber Grommet Hub was designed for Piping (4.500" OD) through a hole, and to replace the standard 4" Cast Iron Hub

The 4" Rubber Grommet Hub was designed to retrofit any 5" ID hole for all "grey water" and sewage applications

This 4" Rubber Grommet Hub eliminates the possibility of inserting the inlet pipe too far into your Poly & Fiberglass Basins

**The 4" Rubber Grommet Hub Received Illinois Department of Public Health approval on April 6, 1998**