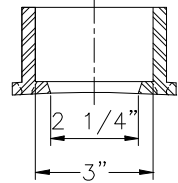
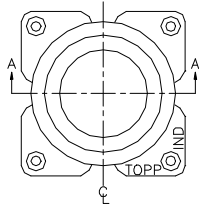
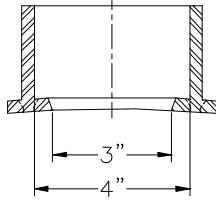
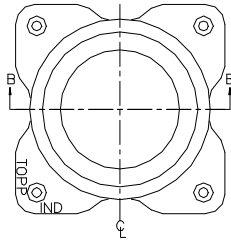


CAST IRON CAULKING HUBS

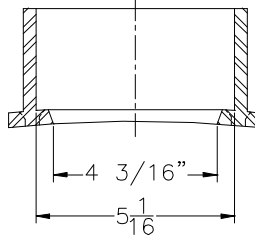
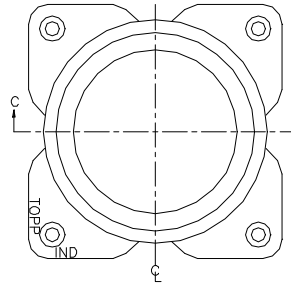
HUB KIT INCLUDES: 5/16"x1 1/2" STAINLESS STEEL BOLTS, WASHERS, NUTS AND 3/4"x1/4" CLOSED CELL FOAM ADHESIVE GASKET MATERIAL.



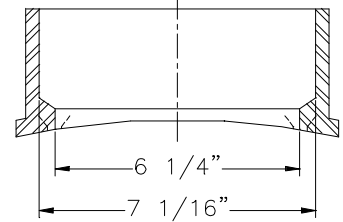
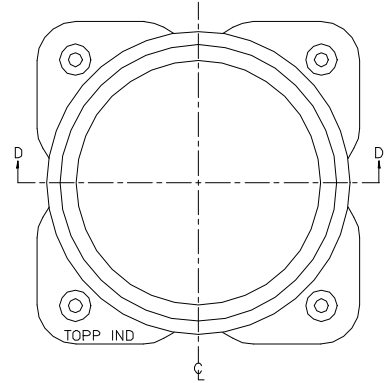
SECTION A-A
PART NO. H200C



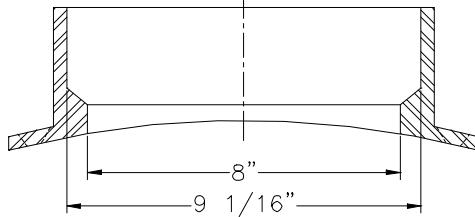
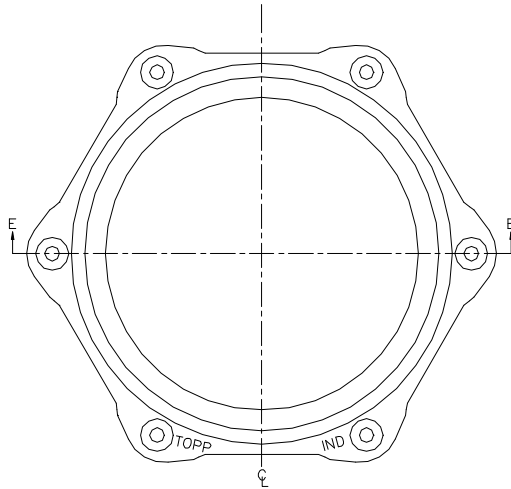
SECTION B-B
PART NO. H300C



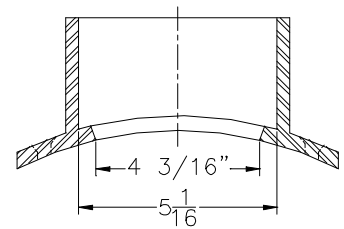
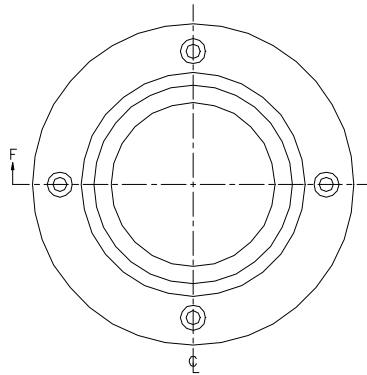
SECTION C-C
PART NO. H400C



SECTION D-D
PART NO. H600C



SECTION E-E
PART NO. H800C



SECTION F-F
PART NO. H400C-18

INSTALLATION INSTRUCTIONS

1. LOCATE PIPE OR HUB CENTER.
2. CUT HOLE TO THE INSIDE DIAMETER OF THE HUB.
3. APPLY GASKET MATERIAL TO THE HUB OR BASIN.
4. ATTACH HUB TO BASIN AND DRILL HOLES FOR BOLTS.
5. INSERT BOLTS, WASHERS, NUTS AND TIGHTEN.
6. INSERT PIPE INTO HUB AND CAULK.

INDUSTRIES
TOPP
INCORPORATED

CAST IRON HUBS

Reference: -

Highway 25 North P.O. Box 420
Rochester, IN 46975
Phone: 800/354-4534 Fax: 574/223-6106

Scale: None

Drawn By: RM

App'd By: .

Date: 06/26/03

Supersedes Prints

Prior To: 06/26/03

This print is and contains confidential proprietary information owned exclusively by TOPP INDUSTRIES, INC. It is furnished on a strictly confidential basis. This restriction includes, but is not limited to the condition that this print will not only be used as a record or to identify or inspect parts or for other information purposes and will not be used to manufacture or procure the manufacture of the items shown in this print by any other source than TOPP INDUSTRIES, INC.

Reference No: 10092

Revisions

① First Released 06/27/03