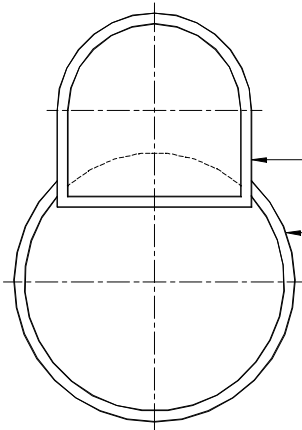


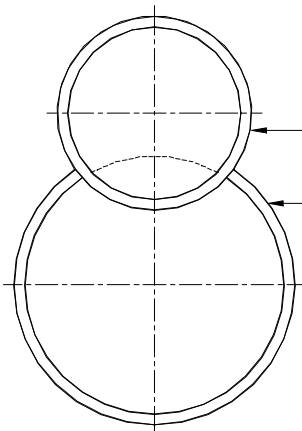
Fiberglass valve vault enclosures by TOPP Industries are designed to isolate valves, controls, and service personnel from the wet well sewage chamber. Fiberglass valve vault enclosures are available as individual units; attached to a wet well to create an integrated unit; or as a pre-fabricated lift station complete with piping, valves, accessories and guide rail system.



WET WELL WITH STANDARD 48" FLAT WALL VALVE VAULT

Valve Vault: 48" diameter x 48" flat wall x 48", 60" or 72" deep
 Wet well: 36", 42", 48", 60" or 72" inside diameter

Designed for 3" and 4" piping systems. Flat wall allows for the wide spread of duplex piping systems.



WET WELL WITH CYLINDRICAL VALVE VAULT

Valve Vault: 36", 42", 48", 60" or 72" inside diameter
 Wet well: 36", 42", 48", 60" or 72" inside diameter

Designed for any piping system requiring deep discharge levels. Bottom portion can be opened for greater wet well capacity.

NOTE:

One piece steel or aluminum hinged and lockable covers are available to accommodate each style.



| | | |
|---|---|---|
| VALVE VAULT OPTIONS | Scale: None | <small>This print is and contains confidential proprietary information owned exclusively by TOPP INDUSTRIES, INC. It is furnished on a strictly confidential basis. This restriction includes, but is not limited to the condition that this print will not only be used as a record or to identify or inspect parts or for other information purposes and will not be used to manufacture or procure the manufacture of the items shown in this print by any other source than TOPP INDUSTRIES, INC.</small> |
| | Drawn By: RM | |
| Reference: - | Appv'd By: . | Reference No: 10117 |
| Highway 25 North P.O. Box 420 Rochester, IN 46975 Phone: 800/354-4534 Fax: 574/223-8106 | Supersedes Prints Prior To: 07/08/03 | |

| Revisions | |
|-----------|-------------------------|
| ① | First Released 06/27/03 |
| | |
| | |