

Ball Check Valve

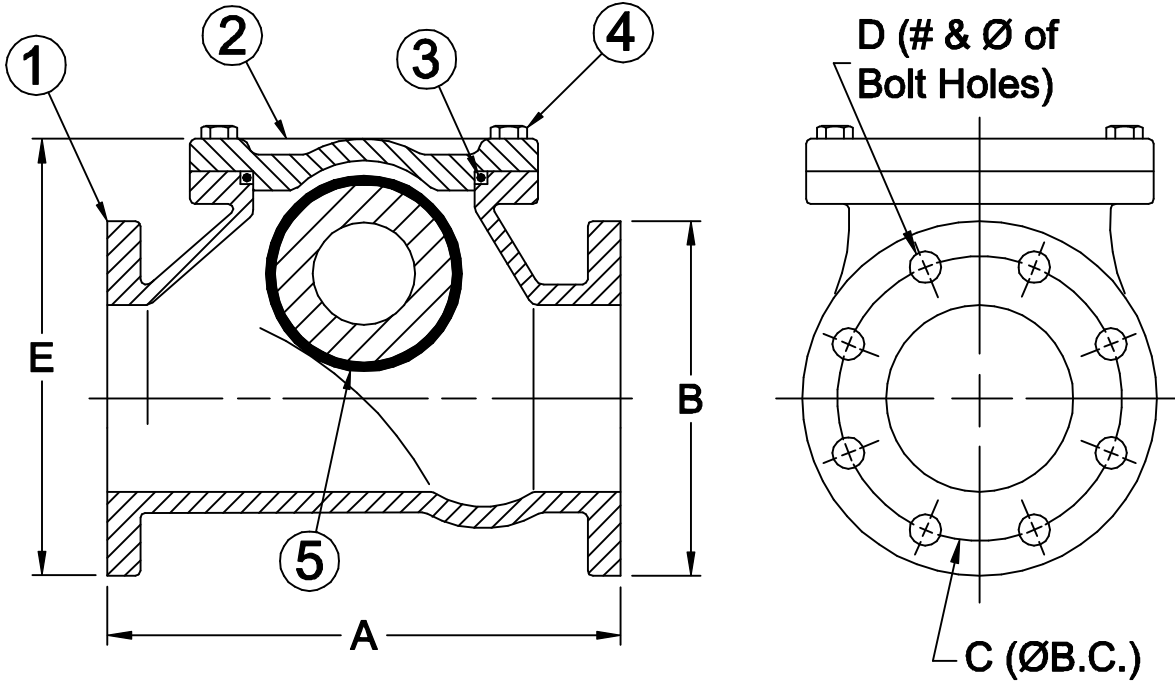
125# Flange

Model 408



Sizes 3" Thru 14" / 80mm Thru 350mm

Materials



Item #	Qty	Description	Material	ASTM
1	1	Body	Cast Iron	A48
2	1	Cover	Cast Iron	A48
3	1	O'Ring	Buna-n	----
4	A/R	Bolt	Stainless Steel	18-8
5	1	Ball (sinking)	Buna-n/Metal Ball	----

*Optional floating ball available add "FB" to part number

*Optional dead ball available add "DB" to part number

Dimensions

Size		Part #	A		B		C		D		E		Weight	
Inch	mm		Inch	mm	Inch	mm	Inch	mm	Inch	mm	Inch	mm	lbs	kg
3	80	2144	10-1/4	260	7-7/8	200	6	152	(4) 3/4	19	9-21/32	245	45	20
5	125	2143	13-25/32	350	10	254	8-1/2	216	(8) 7/8	22	13-1/8	333	85	39
10	250	2148	23-5/8	524	16	406	14-1/4	362	(12) 1	25	22-59/64	582	272	123
12	300	2149	27-35/64	700	19	483	17	432	(12) 1	25	28-25/64	721	541	245
14	350	2150	34-29/64	875	21	533	18-3/4	476	(12) 1-1/8	29	32-9/32	820	790	358

Danfoss Flomatic can accept no responsibility for possible errors in catalogues, brochures and other printed material. Danfoss Flomatic reserves the right to alter its products without notices. This also applies to product already agreed. All trademarks in this material are property of the respective companies. Danfoss and the logotype are trademarks of Danfoss A/S. All right reserved.

DANFOSS FLOMATIC CORP.
GLENS FALLS, N.Y. 12801
PHONE (518) 761-9797
FAX (518) 761-9798

September 10, 2003
Dwg No: S2144-50 Rev: A (4/04)

FLOMATIC®