



Fiberglass Products & Accessories Catalog

BASINS • COVERS • ACCESSORIES

Fiberglass Basins

Standard Features

TOPP's Fiberglass Basins are made with the highest quality material and testing standards currently in the market. Our chop-hoop filament wound tanks are made in 18", 24", 30", 36", 42", 48", 60", 72", 96" & 120" diameters.



TOPP's combination of innovation, service and technology is why TOPP has been the number one choice for environmental and economic solutions in the sewage, sump and wastewater markets for over 35 years.

Premium Fiberglass Vinyl Ester Premium Series



Standard Features

- Corrosion Resistant and High Temperature Fiberglass basins
- Utilizing Vinyl Ester Resin, we can assist with engineering a specific tank for your chemical resistant and high temperature applications
- Experienced staff to help determine your Vinyl Ester needs or help design a complete package station or custom application

Contact Our Team for Pricing and Information

Contact the Topp team at 800-354-4534 with the following information and we will be able to provide the appropriate resin for your application.

- All chemicals to which the basin will be exposed
- Normal operating concentrations of chemicals, maximum and minimums (including trace amounts)
- Operating temperature, include minimum and maximum



Fiberglass Extensions

Includes hardware pack (bolts, washers and gasket tape)

Fiberglass Extension Basin	18"	24"	30"	36"
6" Fiberglass Extension	FB18X006E	FB24X006E	FB30X006E	FB36X006E
12" Fiberglass Extension	FB18X012E	FB24X012E	FB30X012E	FB36X012E
18" Fiberglass Extension	FB18X018E	FB24X018E	FB30X018E	FB36X018E
24" Fiberglass Extension	FB18X024E	FB24X024E	FB30X024E	FB36X024E
30" Fiberglass Extension	FB18X030E	FB24X030E	FB30X030E	FB36X030E
36" Fiberglass Extension	FB18X036E	FB24X036E	FB30X036E	FB36X036E
42" Fiberglass Extension	FB18X042E	FB24X042E	FB30X042E	FB36X042E
48" Fiberglass Extension	FB18X048E	FB24X048E	FB30X048E	FB36X048E

Fiberglass Extension Basin	42"	48"	60"	72"
6" Fiberglass Extension	FB42X006E	FB48X006E	FB60X006E	FB72X006E
12" Fiberglass Extension	FB42X012E	FB48X012E	FB60X012E	FB72X012E
18" Fiberglass Extension	FB42X018E	FB48X018E	FB60X018E	FB72X018E
24" Fiberglass Extension	FB42X024E	FB48X024E	FB60X024E	FB72X024E
30" Fiberglass Extension	FB42X030E	FB48X030E	FB60X030E	FB72X030E
36" Fiberglass Extension	FB42X036E	FB48X036E	FB60X036E	FB72X036E
42" Fiberglass Extension	FB42X042E	FB48X042E	FB60X042E	FB72X042E
48" Fiberglass Extension	FB42X048E	FB48X048E	FB60X048E	FB72X048E



Rectangular Valve Vaults

Standard Features

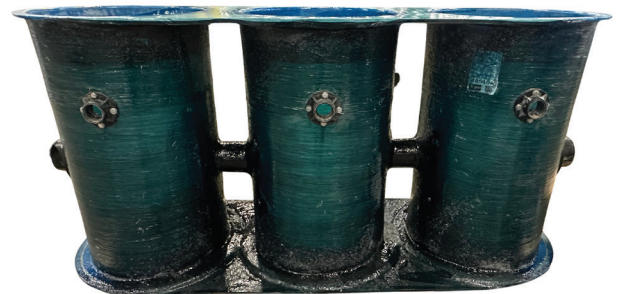
- Constructed of fiberglass with an integral fiberglass anti-flotation flange
- Designed to house the valves eliminating the need to enter the wet-well for service work
- Extremely cost competitive compared to fiberglass or concrete valve vaults
- Available with or without discharge piping and valves
- Custom valve 50x sizes available

Fiberglass Rectangular Valve	Valve Box	Aluminum Cover
20" Wide x 20" Long x 20" Deep Fiberglass Rectangular Valve Box	FRVB20X20X20F	CFM20X20X20A
32" Wide x 30" Long x 25" Deep Fiberglass Rectangular Valve Box	FRVB32X30X25F	CFM32X30X25A
30" Wide x 40" Long x 36" Deep Fiberglass Rectangular Valve Box	FRVB30X40X36F	CFM30X40X36A
35" Wide x 41" Long x 35" Deep Fiberglass Rectangular Valve Box	FRVB35X41X35F	CFM35X41X35A
42" Wide x 50" Long x 48" Deep Fiberglass Rectangular Valve Box	FRVB42X50X48F	CFM42X50X48A
Hold Open Arm		CFMSSHOA

Fiberglass Triple Garage Systems

Standard Features

- Designed to help garage areas and other facilities handle volatile generated waste,
- Reduces the possibility of volatile wastes entering the sewer system, avoiding potential explosion
- Volatile waste, which is lighter than water, is separated through the system of baffles. At the surface, the volatile waste safely evaporates and fumes can be vented into the atmosphere
- The balance of waste matter safely enters the sewer system



Basin ID 18"	Basin ID 24"	Basin ID 30"	Basin ID 36"	Basin ID 42"	Basin ID 48"
FTGS18X030F	FTGS24X030F	FTGS30X030F	FTGS36X030F	FTGS42X030F	FTGS48X030F
FTGS18X036F	FTGS24X036F	FTGS30X036F	FTGS36X036F	FTGS42X036F	FTGS48X036F
FTGS18X042F	FTGS24X042F	FTGS30X042F	FTGS36X042F	FTGS42X042F	FTGS48X042F
FTGS18X048F	FTGS24X048F	FTGS30X048F	FTGS36X048F	FTGS42X048F	FTGS48X048F
FTGS18X054F	FTGS24X054F	FTGS30X054F	FTGS36X054F	FTGS42X054F	FTGS48X054F
FTGS18X060F	FTGS24X060F	FTGS30X060F	FTGS36X060F	FTGS42X060F	FTGS48X060F
FTGS18X066F	FTGS24X066F	FTGS30X066F	FTGS36X066F	FTGS42X066F	FTGS48X066F
FTGS18X072F	FTGS24X072F	FTGS30X072F	FTGS36X072F	FTGS42X072F	FTGS48X072F
FTGS18X078F	FTGS24X078F	FTGS30X078F	FTGS36X078F	FTGS42X078F	FTGS48X078F
FTGS24X084F	FTGS30X084F	FTGS36X084F	FTGS42X084F	FTGS48X084F	
FTGS24X090F	FTGS30X090F	FTGS36X090F	FTGS42X090F	FTGS48X090F	
FTGS24X096F	FTGS30X096F	FTGS36X096F	FTGS42X096F	FTGS48X096F	

Fiberglass Triple Garage Systems Include:

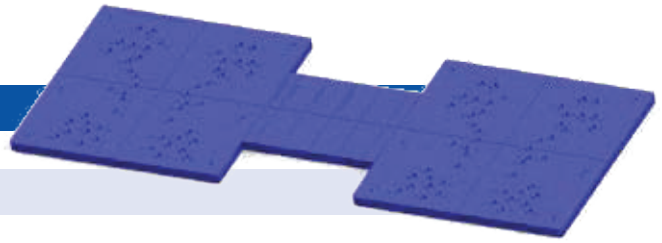
- (3) Fiberglass Basins, (3) 4" Inlets, (3) 4" Discharges, (3) 2" Vents,
- (4) 12" Poly Baffles, and (3) ¼" Thick Solid Steel Covers

Fiberglass Accessories

Pump Mounting Studs

Stainless Steel Simplex Mounting Studs	SS
Stainless Steel Duplex Mounting Studs	SD

- Installed in your fiberglass basin, when ordered from Topp Industries, Inc.



Fiberglass Stud Plates

	ID Basin	Simplex	Duplex
Stainless Steel Mounting Studs	24"	FPSS24	
Stainless Steel Mounting Studs	30"	FPSS30	FPSD30
Stainless Steel Mounting Studs	36"	FPSS36	FPSD36
Stainless Steel Mounting Studs	42"	FPSS42	FPSD42
Stainless Steel Mounting Studs	48"	FPSS48	FPSD48
Stainless Steel Mounting Studs	60"	FPSS60	FPSD60
Stainless Steel Mounting Studs	72"	FPSS72	FPSD72



To retrofit existing fiberglass or concrete (mounted in fiberglass plate)

Junction Boxes

4 x 4 x 4 Simplex Junction Box, w/1-1/2" Hub, (3) 1/2" and (1) 3/4" Cord Grips	JB4S
6 x 6 x 4 Duplex Junction Box, w/2" Hub, (4) 1/2" and (2) 3/4" Cord Grips	JB6S
8 x 8 x 4 Duplex Junction Box, w/2" Hub, (6) 1/2" and (2) 3/4" Cord Grips	JB8S



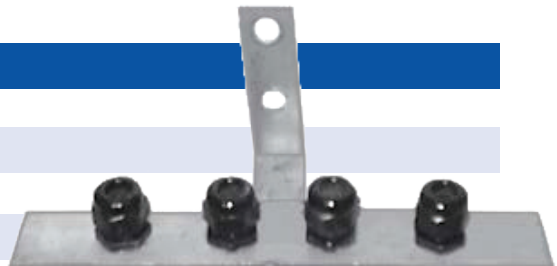
Floats

	20' Cable	30' Cable	40' Cable	50' Cable
Mini-Bulb, Mercury, Normally Open	MMFLOAT-20	MMFLOAT-30	MMFLOAT-40	MMFLOAT-50
Mercury Bulb, Normally Open	MCFLOAT-20	MCFLOAT-30	MCFLOAT-40	MCFLOAT-50
Mechanical Bulb, Normally Open	MEFLOAT-20	MEFLOAT-30	MEFLOAT-40	MEFLOAT-50



Stainless Steel Float Brackets

304 Stainless Steel Simplex Float Bracket	SSFB3-12
304 Stainless Steel Duplex Float Bracket	SSFB4
Stainless Steel 3 Hole Float Bracket	SS3FB
Stainless Steel 6 Hook Float Bracket	SS6AHB

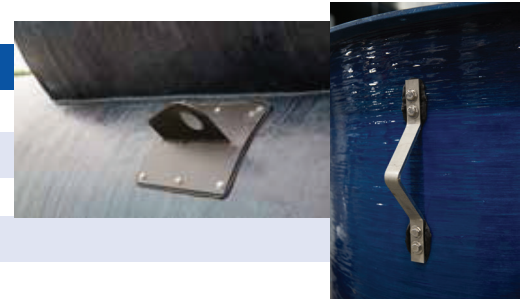


- Shipped loose or installed in your basin when ordered from Topp Industries.

Fiberglass Accessories

Heavy Duty Lifting Lugs

Industrial Enamel Steel Mini-Lifting Lug	LL050
Stainless Steel Mini-Lifting Lug	LL050SS
Industrial Enamel Steel Lifting Lug	LL100
Stainless Steel Lifting Lug	LL100SS



- Installed on your fiberglass basin when ordered from Topp Industries
- Sold each. Two or three recommended

Vents

2" Screened Green Vent w/Galvanized Close Nipple	GV200
3" Screened Green Vent w/Galvanized Close Nipple	GV300
4" Screened Green Vent w/Galvanized Close Nipple	GV400
2" Plastic Mushroom Vent w/2" Grommet	PV200
2" Plastic Mushroom Vent w/Activated Carbon & 2" Grommet	PVAC200



Aluminum Ladder

Aluminum Ladder for Easier Lift Station Access	AL12
--	------

- Sold by the foot
- Shipped loose or installed in your basin when ordered from Topp Industries



Link Seals

Link Seal LS-200-C	LS-200-C	Link Seal LS-200-S316	LS-200-S316
Link Seal LS-300-C	LS-300-C	Link Seal LS-300-S316	LS-300-S316
Link Seal LS-315-C	LS-315-C	Link Seal LS-325-S316	LS-325-S316
Link Seal LS-325-C	LS-325-C	Link Seal LS-340-S316	LS-340-S316
Link Seal LS-340-C	LS-340-C	Link Seal LS-400-S316	LS-400-S316
Link Seal LS-400-C	LS-400-C	Link Seal LS-410-S316	LS-410-S316
Link Seal LS-410-C	LS-410-C	Link Seal LS-425-S316	LS-425-S316
Link Seal LS-425-C	LS-425-C	Link Seal LS-475-S316	LS-475-S316
Link Seal LS-475-C	LS-475-C		



Fiberglass Accessories

Threaded Couplings

1-1/4" NPT Composite Bolt-on Coupling+	C125FG
1-1/2" NPT Composite Bolt-on Coupling+	C150FG
2" NPT Composite Coupling+	C200FG
1-1/4" NPT Industrial Enameled Steel Bolt-on Coupling+	C125E
1-1/2" NPT Industrial Enameled Steel Bolt-on Coupling+	C150E
2" NPT Industrial Enameled Steel Bolt-on Coupling+	C200E
3" NPT Industrial Enameled Steel Bolt-on Coupling+	C300E
4" NPT Industrial Enameled Steel Bolt-on Coupling+	C400E
1-1/4" NPT Stainless Steel Bolt-on Coupling+	C125S
1-1/2" NPT Stainless Steel Bolt-on Coupling+	C150S
2" NPT Stainless Steel Bolt-on Coupling+	C200S
3" NPT Stainless Steel Bolt-on Coupling+	C300S
4" NPT Stainless Steel Bolt-on Coupling+	C400S
Nylon Electrical Threaded Couplings	PC-0125SM
Nylon Electrical Threaded Couplings	PC-0125LG
Nylon Electrical Threaded Couplings	PC-0125SM
Nylon Electrical Threaded Couplings	PC-0150SM
Nylon Electrical Threaded Couplings	PC-0150LG
Nylon Electrical Threaded Couplings	PC-0200SM
Nylon Electrical Threaded Couplings	PC-0200 LG

+ Includes hardware pack (bolts, washers and gasket tape)



Pipe Grommet Inlet Hub

Pipe Seal for 4" Piping Through a 5" Hol	H400R
Pipe Seal for 4" SDR 35 Piping Through a 5" Hole	H400R35
Pipe Seal for 6" Piping	H600R
Pipe Seal for 6" SDR 35 Piping	H600MTH
Pipe Seal for 8" SDR 35 Piping	H800MTH

- Pipe seal for 4" piping
- Piping will penetrate about 1 3/4" and stop
- State of Illinois approved



PVC Hub

4" PVC Hub for 18"-24" Diameter Basins	S424
4" PVC Hub for 30"+ Diameter Basins	S442



Fiberglass Accessories

Cast Iron Caulking Inlet Hubs

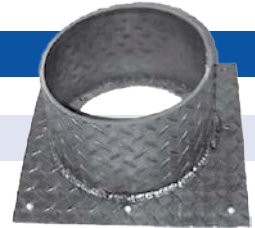
Curved Back Cast Iron Hub for 2" Piping+	H200C
Curved Back Cast Iron Hub for 3" Piping+	H300C
Curved Back Cast Iron Hub for 4" Piping+	H400C
Curved Back Cast Iron Hub for 4" Piping on 18" Basins+	H400C-18
6" Curved Back Cast Iron Hub for 6" Piping+	H600C
8" Curved Back Cast Iron Hub for 8" Piping+	H800C



- Industrial enameled bolt-on inlet cast iron hubs.

Aluminum Inlet Hubs

Curved Aluminum Hub for 10" Piping+	H1000A
Curved Aluminum Hub for 12" Piping+	H1200A



- Specify the diameter of your basin
- Other sizes available upon request

Composite Hubs

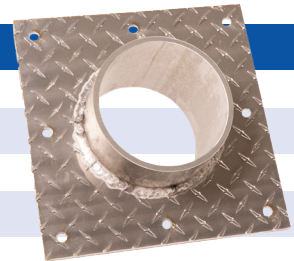
2" Fiberglass Hub for 4" Piping+	H201FG
3" Fiberglass Hub for 4" Piping+	H301FG
4" Fiberglass Hub for 4" Piping+	H401FG
6" Fiberglass Hub for 6" Piping+	H601FG
8" Fiberglass Hub for 8" Piping+	H801FG



- Fiberglass composite bolt-on hubs
- Specify basin size for composite hubs, fiberglass sleeves

Aluminum Bolt-On Sleeve

2" Aluminum Sleeve+	SLV0200A	8" Aluminum Sleeve+	SLV0800A
3" Aluminum Sleeve+	SLV0300A	10" Aluminum Sleeve+	SLV1000A
4" Aluminum Sleeve+	SLV0400A	12" Aluminum Sleeve+	SLV1200A
6" Aluminum Sleeve+	SLV0600A		



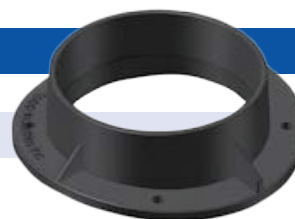
- Specify the diameter of your basin
 - Other sizes available upon request
- +Includes hardware pack (bolts, washers and gasket tape)

Fiberglass Accessories

Fiberglass Sleeve

4" Fiberglass Sleeve+	S400FG
6" Fiberglass Sleeve+	600FG
8" Fiberglass Sleeve+	S800FG

- Specify basin size for composite hubs, fiberglass sleeves



STANDARD DIAMETER SDR35 PVC PIPE

Nominal Pipe Size	Actual Pipe Size	Sleeve	Link Seal Model	# Links Per Seal
4	5.000	6	LS-315-C	10
6	7.000	10	LS-410-C	10
8	9.000	12	LS-475-C	12
10	11.000	14	LS-475-C	10
12	13.000	16	LS-425-C	12

STANDARD DIAMETER DUCTILE IRON PIPE

Nominal Pipe Size	Actual Pipe Size	Sleeve	Link Seal Model	# Links Per Seal
2	3.000	4	LS-300-C	6
2½	3.000	5	LS-325-C	4
3	4.000	6	LS-325-C	5
4	5.000	8	LS-400-C	5
6	7.000	10	LS-400-C	7
8	9.050	12	LS-475-C	12
10	12.000	14	LS-400-C	11
12	14.000	16	LS-400-C	12
14	16.000	18	LS-360-C	24
16	18.000	22	LS-400-C	16
18	19.500	24	LS-400-C	18
20	22.000	25	LS-400-C	20

Fiberglass Accessories

STANDARD DIAMETER SCH40 STEEL PIPE				
Nominal Pipe Size	Actual Pipe Size	Sleeve	Link Seal Model	# Links Per Seal
1/2	.840	2	LS-200-C	4
3/4	2.000	2	LS-200-C	4
1	2.005	2½	LS-200-C	5
1-1/4	2.000	4	LS-340-C	5
1-1/2	2.000	3	LS-200-C	6
2	3.005	4	LS-300-C	6
2-1/2	3.005	4	LS-200-C	9
3	4.000	6	LS-340-C	9
4	5.000	6	LS-300-C	10
5	6.003	8	LS-425-C	6
6	7.005	10	LS-400-C	7
8	9.005	12	LS-475-C	12
10	11.000	14	LS-400-C	10
12	13.000	16	LS-425-C	12
14	15.000	18	LS-400-C	13
16	17.000	20	LS-400-C	15
18	19.000	22	LS-400-C	17
20	21.000	24	LS-400-C	18



Grommets	
For 1¼" Piping (OD) Through 3" Hole	G125
For 1½" Piping (OD) Through 3" Hole	G150
For 2" Piping (OD) Through 3" Hole	G200
For 3" Piping (OD) Through 4" Hole	G300
For 4" Piping (OD) Through 5" Hole	G400
For SDR35 4" Piping (OD) Through 5" Hole	G400SDR35
Electric Cord Grommet, Seals up to 3 Cords (up to 3/8" OD) Through 2-1/2" Hole	ECG
Electric Cord Grommet Through a 2" Hole	ECG200
Blank Snap Plug for 3" Hole (steel covers only)	BSP300
Electric Cord Plug 1Hole	ECP
Electric Cord Plug 2 Hole	ECP

- Quick, easy and sure pipe seal

Fiberglass Accessories

Flexible Couplings

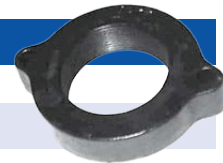
4" x 2" Piping	FFB4X2
6" x 4" Piping	FFB6X4
8" x 6" Piping	FFB8X6
10" x 8" Piping	FFB10X8



- Leak-proof seal for hubs and sleeves
- Easy to apply in tight spaces
- Other sizes available

Cast Iron 2-Bolt Flange

	2" Piping	3" Piping	4" Piping
Cast Iron 2-Bolt Slip Flange, w/O-ring	CF200S	CF300S	CF400S
Cast Iron 2-Bolt Threaded Flange	CF200T	CF300T	CF400T



- Cast Iron threaded vent and slip discharge flanges
- 1-1/4" and 1-1/2" available upon request

Plastic 2-Bolt Flange

Plastic 2-Bolt Slip Flange, w/O-ring for 1-1/4" Piping	PF125S
Plastic 2-Bolt Slip Flange, w/O-ring for 1-1/2" Piping	PF150S
Blank Plastic Flange for 2" Hole	PF200B
Plastic 2-Bolt Slip Flange, w/O-ring for 2" Piping	PF200S
Plastic 2-Bolt Threaded Flange for 2" Piping	PF200T
Plastic 2-Bolt Slip Flange, w/O-ring for 3" Piping	PF300S
Plastic 2-Bolt Threaded Flange for 3" Piping	PF300T



- Cast Iron threaded vent and slip discharge flanges
- 1-1/4" and 1-1/2" available upon request

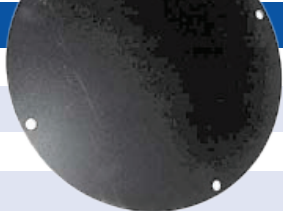
Flexible Boot Fittings


1" Piping	FB100
1-1/4" Piping	FB125
1-1/2" Piping	FB150
2" Piping	FB200
3" Piping	FB300
4" Piping	FB400
6" Piping	FB600



- For straight or angled penetrations

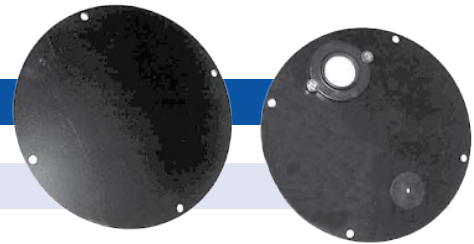
Fiberglass Accessories

Inspection Plates - 12 Gauge		10"
Blank Inspection Plate+	IN00-12	
w/One 1/2" Cord Grip+	IN01-12	
w/Two 1/2" Cord Grips+	IN02-12	
w/Three 1/2" Cord Grips+	IN03-12	
w/Four 1/2" Cord Grips+	IN04-12	
Blank Inspection Plate+	IN00-25	

Inspection Plates - 1/4" Thick		10"
Blank Inspection Plate+	IN00-25	
w/One 1/2" Cord Grip+	IN01-25	
w/Two 1/2" Cord Grips+	IN02-25	
w/Three 1/2" Cord Grips+	IN03-25	
w/Four 1/2" Cord Grips+	IN04-25	
1" Steel Float Pole Coupling Welding Under Inspection Plate+ FP100E		

- 10" diameter for an 8" clear access opening
- +With Hardware and Sealing Material

Access Plates - 12 Gauge	16"	18"
Blank Pump Access Plate+	16BPA-12	18BPA-12
Pump Access Plate*	16PA-12	18PA-12



Access Plates - 1/4" Thick	16"	18"	22"	28"
Blank Pump Access Plate+	16BPA-25	18BPA-25	22BPA-25	28BPA-25
Pump Access Plate*	16PA-25	18PA-25	22PA-25	28PA-25

- Epoxy coated 12-gauge steel for easier pump installation and removal
- +With Hardware and Sealing Material
- *With (1) ECG Grommet, (1) Discharge Flange, Hardware and Sealing Material

Cover Perforation Adder	
10 Holes Randomly Placed	PER105

- Perforate any 1/4" thick steel cover with 1/2" OD holes

Fiberglass Accessories

Electric Cord Grips

½" NPT, Seals Cords from 1.006" to 1.002" OD	GRIP050
¾" NPT, Seals Cords from 1.001" to 1.008" OD	GRIP075
1" NPT, Seals Cords from 1.006" to 2.004" OD	GRIP100

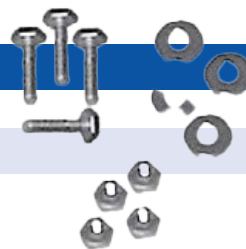
- Easily adjust your power cord without entering the basin



Bolt and Washers

1/4"- 20 x 1-1/4" Bolts (6), 1/4"- 20 Washers (6)	HP1420
5/16"-18 x 1½" Bolts (6), 5/16"-18 Washers (6)	HP516
3/8"-16 x 1½" Bolts (6), 3/8"-16 Washers (6)	HP38

- Replacement stainless steel hardware packs for Topp Industries covers



Shipping Skid

Fiberglass Basin Polyethylene Shipping Skid	POLYSKIDS
---	-----------

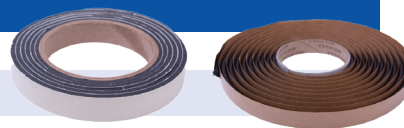
- Reduce the shipping damage on fiberglass basins 96" or longer
- Required for Basins over 96"
- Includes 2 Poly Skids for One Basin



Gasket Material

Foam Tape Seal - 1/8"x3/4"x6'	CGM06F
Butyl Tape Seal - 3/8"x15'	CGM15B

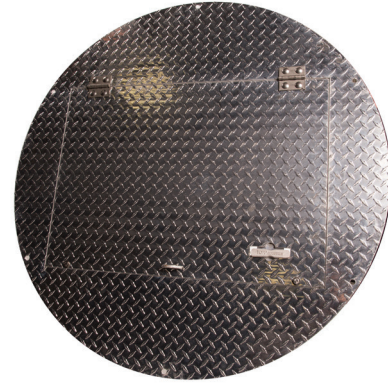
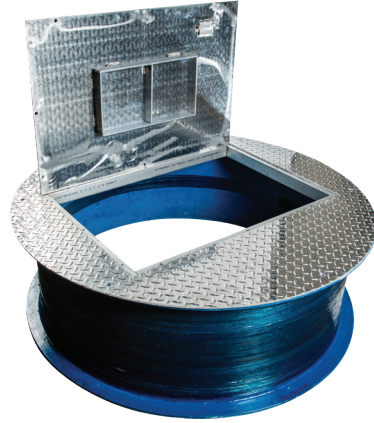
- Replacement cover gasket material for gas-tight and water-tight seals



Basin Covers



Basin Covers	18"	24"	30"	36"	42"
12g Simplex Black Epoxy Steel Cover w/(1) Access Plate and (1) Blank Inspection Plate		C24-12SSA	C30-12SSA		
12g Simplex Black Epoxy Steel Cover w/(1) Access Plate and (1) Blank Inspection Plate				C36-12SSA	
12g Duplex Black Epoxy Steel Cover w/(2) Access Plate and (1) Blank Inspection Plate				C36-12DSA	
14g Solid Black Epoxy Steel Cover	C18WSL	C24WSL	C30WS	C36WS	C42WS
14g Simplex Black Epoxy Steel Cover	C18SS	C24SSL			
1/4" Thick Solid Black Epoxy Steel Cover	C18WSH	C24WSH			
1/4" Thick Simplex Black Epoxy Steel Cover	C18SSH	C24SSH			
1/4" Thick Simplex Black Epoxy Steel Cover w/(1) Access Plate and (1) Blank Inspection Plate		C24SSA	C30SSA	C36SFA	C42SSA
1/4" Thick Duplex Black Epoxy Steel Cover w/(2) Access Plates and (1) Blank Inspection Plate		C24DSA	C30DSA		C42DSA
Simplex Non-Skid Fiberglass Cover	C18FSNST	C24WFNST	C30WFNST		C42WFNST
1/2" Thick Non-Skid Simplex Fiberglass Cover w/Access		C24SFA	C30SFA		C42SFA
1/2" Thick Non-Skid Duplex Fiberglass Cover w/Access			C30DFA	C36DFA	C42DFA
1/4" Thick Perforated Elevator Cover	C18ELE	C24ELE			
Steel Single Hatch Door		C24HSS	C30HSS	C36HSS	C42HSS
Aluminum Single Hatch Door		C24HSA	C30HSA	C36HSA	C42HSA
Non-Skid Solid Green Fiberglass Cover	C18WFNST	C24FSNST			
E-Series Solid Foam Cover	E-C18EWSF	E-C24EWSF			
E-Series Single Hole Foam Cover	E-C18EWSFE	E-C24EWSFE			
E-Series Simplex Foam Cover-2X2 Grom	E-C18G-2	E-C24G-2			
E-Series Simplex Foam Cover-2X3 Grom	E-C18G-3	E-C24G-3			
E-Series Simplex Foam Cover W/Flanges	E-C18F	E-C24F			
E-Series Simplex Two-Piece Foam Cover	E-C18TSF				



Basin Covers	48"	60"	72"	96"	120"
1/4" Thick Solid Steel Cover	C48WS				
3/8" Thick Solid Steel Cover		C60WS	C72WS		
1/4" Thick Simplex Black Epoxy Steel Cover w/(1) Access Plate and (1) Blank Inspection Plate	C48SSA				
3/8" Thick Simplex Black Epoxy Steel Cover w/(1) Access Plate and (1) Blank Inspection Plate		C60SSA	C72SSA		
1/4" Thick Duplex Black Epoxy Steel Cover w/(2) Access Plates and (1) Blank Inspection Plate	C48DSA	C60DSA	C72DSA		
Simplex Non-Skid Fiberglass Cover	C48WFNST				
1/2" Thick Non-Skid Simplex Fiberglass Cover w/Access	C48SFA				
1/2" Thick Non-Skid Duplex Fiberglass Cover w/Access	C48SFA				
1/2" Thick Non-Skid Fiberglass Hatch Cover	C48HSFNST				
1/2" Thick Solid Blue Fiberglass Cover		C60WF	C72WF		
Steel Single Hatch Door	C4HSS	C60HSS	C72HSS		
Aluminum Single Hatch Door	C42HSA	C60HSA	C72HSA	C96HSA	C120HSA

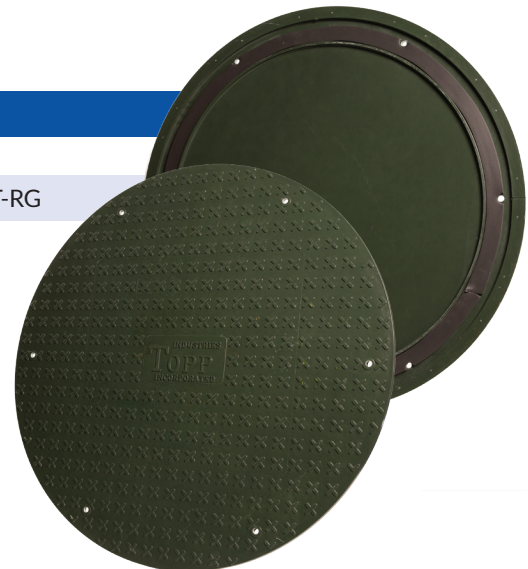
Septic Covers

Non-Skid Solid Fiberglass Septic Cover

24" ID Non-Skid Fiberglass "Heavy" Septic Riser Cover	C25WFNST
FG Septic Riser Cover-Lite, Non-Skid (Dot) Rubber Gasket	C25WFNSLT-RG

Designed To Fit Polyethylene Septic Risers. Riser Cover Includes:

- 24" ID Topp Polyethylene Septic Riser
- Stainless steel hex head
- 24" ID Ultra Rib Septic Riser
- Bolts washers, nuts
- 24" ID Spiral Septic Riser
- (1 roll) Butyl Gasket Material
- 24" ID Polyethylene Corrugated Wall Septic Riser
- 24" ID Polyethylene Corrugated Smooth Wall Septic Riser





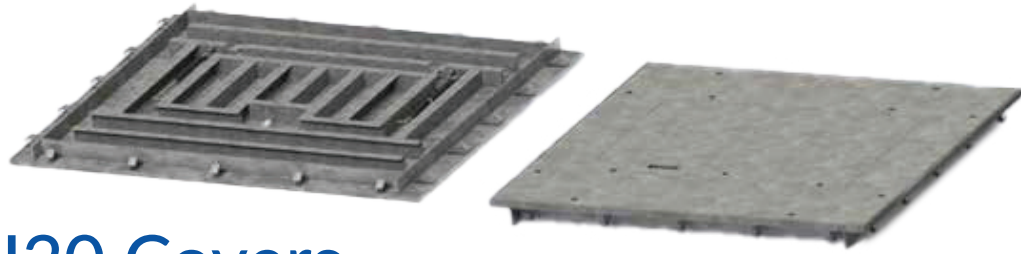
Round H2O Covers

Round H2O Hatch Access Covers	Part No.	Inside*	Outside*	Bolt*	Clear Access*
18" Solid	C18WS-20	18	22-7/8	21	
24" Solid	C24WS-20	24	28-7/8	27	
30" Solid	C30WS-20	30	34-7/8	33	15 x 20
36" Solid	C36WS-20	36	42-7/8	40	19-3/4 x 24-1/8
42" Solid	C42WS-20	42	48-7/8	46	20-3/4 x 30-3/4
48" Solid	C48WS-20	48	54-7/8	52	22 x 34-1/4
60" Solid	C60WS-20	60	66-3/4	64	25-7/8 x 36
72" Solid	C72WS-20	72	78-5/8	76	30-3/4 x 45
30" Hatch	C30HSS-20	30	34-7/8	33	15 x 20
36" Hatch	C36HSS-20	36	42-7/8	40	19-3/4 x 24-1/8
42" Hatch	C42HSS-20	42	48-7/8	46	20-3/4 x 30-3/4
48" Hatch	C48HSS-20	48	54-7/8	52	22 x 34-1/4
60" Hatch	C60HSS-20	60	66-3/4	64	25-7/8 x 36
72" Hatch	C72HSS-20	72	78-5/8	76	30-3/4 x 45
30" Gas Tight Hatch	C30SSX-20	30	34-7/8	33	15 x 20
36" Gas Tight Hatch	C36SSX-20	36	42-7/8	40	19-3/4 x 24-1/8
42" Gas Tight Hatch	C42SSX-20	42	48-7/8	46	20-3/4 x 30-3/4
48" Gas Tight Hatch	C48SSX-20	48	54-7/8	52	22 x 34-1/4
60" Gas Tight Hatch	C60SSX-20	60	66-3/4	64	25-7/8 x 36
72" Gas Tight Hatch	C72SSX-20	72	78-5/8	76	30-3/4 x 45

- 5/8" thick ASTM A36 smooth steel
- Steel curb fram with anchor legs
- Hot dipped galvanized finish
- Threaded holes for eyebolts to assist in lifting
- 16,000 lbs load rating for use in off-street locations
- Solid, gas tight hatch or hinged hatch
- Acceptable for use in parking garages
- 18" - 120" Flange for H2O Covers available

Optional Features

- Tread plate steel
- Fall through protection



Square H20 Covers

Square H20 Hatch Access Covers	Part No.	Inside*	Outside*	Bolt*	Clear Access*
24" Solid	C24WSSQ-20	24-1/4	28-3/4	26-1/2	24-1/4 x 24-1/4
30" Solid	C30WSSQ-20	30-1/4	34-3/4	32-1/2	30-1/4 x 30-1/4
36" Solid	C36WSSQ-20	34-1/4	40-3/4	38-1/2	34-1/4 x 34-1/4
42" Solid	C42WSSQ-20	40-1/4	46-3/4	44-1/2	40-1/4 x 40-1/4
48" Solid	C48WSSQ-20	48-1/4	54-3/4	50	48-1/4 x 48-1/4
60" Solid	C60WSSQ-20	60-1/4	66-3/4	64-1/2	60-1/4 x 60-1/4
72" Solid	C72WSSQ-20	72-1/4	78-3/4	76-1/2	72-1/4 x 72-1/4
30" Hatch	C30HSSSQ-20	30-1/4	34-3/4	32-1/2	18-1/4 x 22-3/4
36" Hatch	C36HSSSQ-20	34-1/4	40-3/4	38-1/2	19-3/4 x 24-1/4
42" Hatch	C42HSSSQ-20	40-1/4	46-3/4	44-1/2	24-1/4 x 31-3/4
48" Hatch	C48HSSSQ-20	48-1/4	54-3/4	50	25-1/4 x 36-1/8
60" Hatch	C60HSSSQ-20	60-1/4	66-3/4	64-1/2	29 x 39-5/8
72" Hatch	C72HSSSQ-20	72-1/4	78-3/4	76-1/2	33-7/8 x 48
30" Gas Tight Hatch	C30HSSXSQ-20	30-1/4	34-3/4	32-1/2	18-1/4 x 22-3/4
36" Gas Tight Hatch	C36HSSXSQ-20	34-1/4	40-3/4	38-1/2	19-3/4 x 24-1/4
42" Gas Tight Hatch	C42HSSXSQ-20	40-1/4	46-3/4	44-1/2	24-1/4 x 31-3/4
48" Gas Tight Hatch	C48HSSXSQ-20	48-1/4	54-3/4	50	25-1/4 x 36-1/8
60" Gas Tight Hatch	C60HSSXSQ-20	60-1/4	66-3/4	64-1/2	29 x 39-5/8
72" Gas Tight Hatch	C72HSSXSQ-20	72-1/4	78-3/4	76-1/2	33-7/8 x 48

- 5/8" thick ASTM A36 smooth steel
- Steel curb fram with anchor legs
- Hot dipped galvanized finish
- Threaded holes for eyebolts to assist in lifting
- 16,000 lbs load rating for use in off-street locations
- Solid, gas tight hatch or hinged hatch
- Acceptable for use in parking garages

Optional Features

- Tread plate steel
- Fall through protection



In 1988, Kevin Birchmeier had a vision of creating a quality product that consumers could not only trust, but rely on, for the best choice in economical and environmentally responsible sump, sewage and wastewater products. Getting its start out of a 500 square foot garage in Rochester, Indiana, TOPP Industries, Inc. was started from humble beginnings – and only a few employees. Since that time, TOPP has grown to an internationally recognized brand with over 130 employees and over 300,000 square feet of manufacturing space.

Highway 25 North

Rochester, IN 46975

Phone: 574-223-3681

Fax: 574-223-6106

Email: toppindustries@toppindustries.com

www.toppindustries.com

800-354-4534