

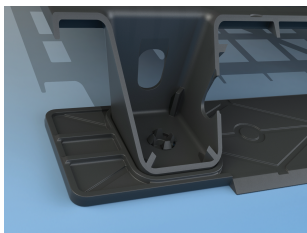
Lightweight Stackable Pallet



The **Lightweight Stackable Pallet** from TOPP is a fully recyclable, injection molded pallet made from repurposed structural foam material. This lightweight solution is stackable, providing a space saving solution for warehousing and distribution centers. Our pallet has three detachable runners and a non-skid surface for additional durability and support.

Features Include:

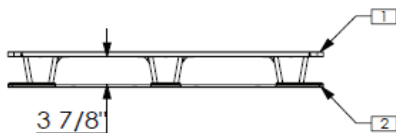
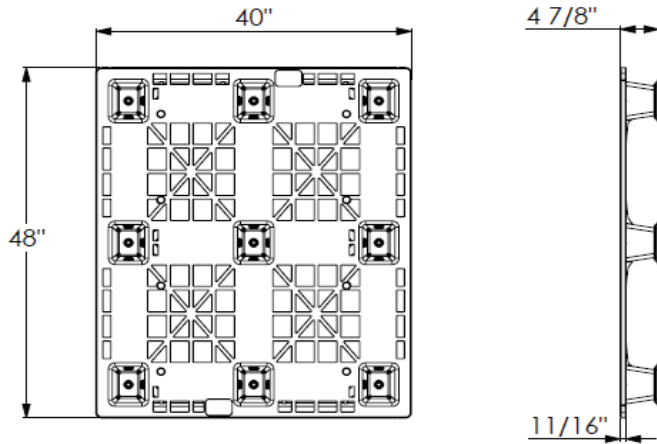
- Injection molded with structural foam material to keep cost down
- Made of recycled HDPE high density plastic
- Stackable to fit 2,000 or more in one truckload
- Each pallet assembly includes 3 detachable runners that lock securely into place



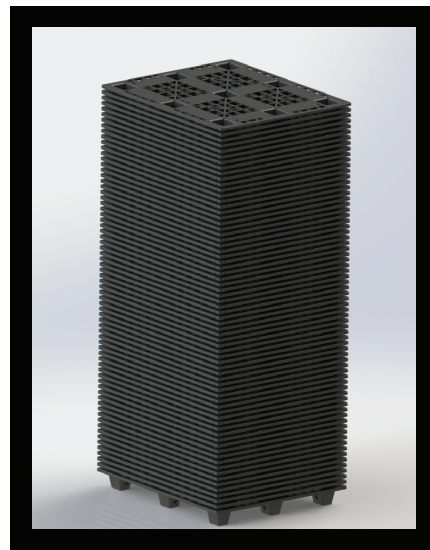
Made from 100% recyclable material



Lightweight Stackable Pallet



*Pallets stackable up to 70 units.
Yields up to 2,080 per 53' trailer
load.*



LIGHTWEIGHT STACKABLE PALLET							
DIMENSIONS			WEIGHT			CAPACITY	LOAD RATING
Width	Length	Height	Pallet Alone	3 Bottom Runners	Total Assembly	53' Trailer	Static
40 in.	48 in.	3.875 in.	17 lbs.	4.5 lbs.	21.5 lbs.	2,080/load	2,000 lbs.