



Structural Foam and Polyethylene Products & Accessories Catalog

BASINS • COVERS • ACCESSORIES

Structural Foam Basins Evolution E-Series

Standard Features

- Engineered to incorporate the ultimate blend of value and improved design features into a single platform
- 180° flat pockets for positive grommet seal
- Self-tapping hardware – no inserts to corrode or protect
- No external stacking ribs to interfere with external filtration
- All covers gas and odor tight with included gasket kit
- Approved for use in radon mitigation applications
- Improved design provides increased structural integrity with less material for improved value and ease of handling
- Accommodates 4" composite inlet hubs

17"x16"

15 US Gallons Capacity

Undrilled / No Grommit

Solid – PSB17X16

Peforated – PSB17X16-PERF

18"x22"

22 US Gallons Capacity

Undrilled / No Grommit

Solid – E2-2200

Peforated – E2-2200P

18"x24"

23 US Gallons Capacity

Undrilled / No Grommit

E7-1824





18"x30"

30 US Gallons Capacity
Undrilled / No Grommit
E3-2400

24"x24"

45 US Gallons Capacity
Undrilled / No Grommit
E4-3100

24"x30"

58 US Gallons Capacity
Undrilled / No Grommit
E-2430

24"x36"

68 US Gallons Capacity
Undrilled / No Grommit
E5-3200

24"x48"

88 US Gallons Capacity
Undrilled / No Grommit
ESF-24X48F

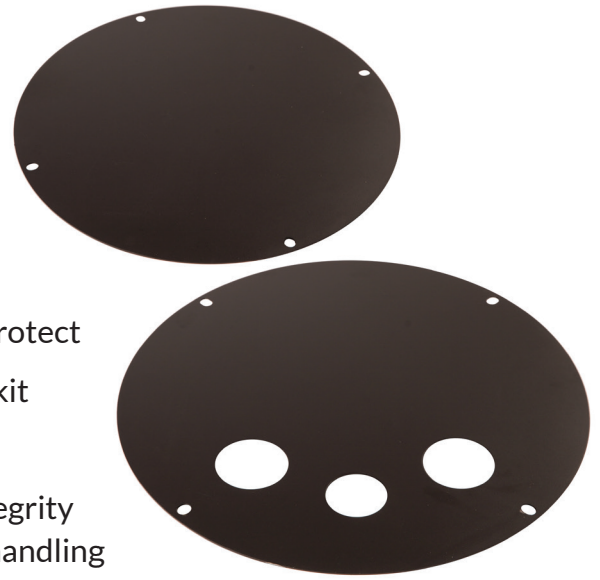
30"x36"

105 US Gallons Capacity
Undrilled / No Grommit
E6-4100

Structural Foam Basins Evolution E-Series Structural Foam Covers

Standard Features

- Self-tapping hardware – no inserts to corrode or protect
- All covers gas and odor tight with included gasket kit
- Approved for use in radon mitigation applications
- Improved design provides increased structural integrity with less material for improved value and ease of handling



DETAIL	18"	24"	30"
E-Series Solid Foam Cover +	E-C18EWSF	E-C24EWSF	
E-Series Single Hole Foam Cover (ECG Only)*	E-C18EWSFE	E-C24EWSFE	
E-Series Simplex Foam Cover w/Gaskets*	E-C18G E-C24G		
14g Solid Steel Cover*	C18WSL	C24WSL	
14g Single Hole Steel Cover+	C18WSE		
14g Simplex Steel Cover*	C18SS	C24SSL	
2-Piece 14g Simplex Steel Cover*	C18TS		
1/4" Solid Steel Cover+		C24WSH	C30WS
1/4" Simplex Steel Cover*		C24SSH	C30SSA
12g Simplex Steel Cover (1) Pump Access Plate*		C24-12SSA	C30-12SSA
12g Duplex Steel Cover (2) Pump Access Plate*			C30-12DSA
1/2" Non-Skid Simplex Fiberglass Cover w/Access*			C30SFA
1/2" Non-Skid Duplex Fiberglass Cover w/Access*			C30DFA
Solid Non-Skid Fiberglass Cover	C18WFNSTP	C24WFNSTP	C30WFNSTP
Simplex Non-Skid Fiberglass Cover	C18FSNSTPP	C24FSNSTP	C30FSNSTP
E-Series Slotted Foam Cover	E-C18SLOT		
E-Series Solid Foam Cover	E-C18EWSF	E-C24EWSF	
E-Series Single Hole Foam Cover	E-C18EWSFE	E-C24EWSFE	
E-Series Simplex Foam Cover-2X2 Grom	E-C18G-2	E-C24G-2	
E-Series Simplex Foam Cover-2X3 Grom	E-C18G-3	E-C24G-3	
E-Series Simplex Foam Cover w/Flanges	E-C18F	E-C24F	
E-Series Simplex Two-Piece Foam Cover	E-C18TSF		

NOTES

+ Includes hardware pack (bolts, washers and gasket tape)

* Includes hardware pack, discharge, vent and ECG

^ (2) 5" ID holes drilled 10-1/2" down CL-180° apart

Sink Tray Basins



12-1/2" X 15" **Sump Pump Basin**

E11-1100

- Durable Structural Foam
- 7.3 US Gallons Capacity
- Ideal for home water handling needs, wet bars, laundry drainage, grey wastewater drainage and more



E-Series - "The Cube" **Sump Basin**

E1-1100

- Corrosion-Resistant Structural Foam
- 11 US Gallons Capacity
- Gas and Water Tight Cover
- Perfect for larger capacity needs of commercial applications such as restaurants, cocktail lounges and other related areas.



12-1/2" X 15" **Crawl Space Sump Pump Basin**

E11-1100-PERF Crawl Space

- Durable Structural Foam
- 7.3 US Gallons Capacity
- Lightweight
- Provides the best solution for waterproofing in the home.
- Custom designed and fitted for crawl spaces areas
- Perfect solution for dewatering under homes, basements or anywhere water may accumulate

Poly Basins

Standard Features

- Designed specifically for long-term reliability with extreme economy in mind
- Manufactured using the highest grade of polyethylene
- Offering years of trouble-free and quality performance
- True Radon protection
- Cover Options



14" x 24" Poly Basin

B1400

15 US Gallons Capacity
Undrilled - No Grommet

18" x 22" Poly Basin

B2200

22 US Gallons Capacity
Undrilled - No Grommet

18" x 24" Poly Basin

B1824

24 US Gallons Capacity
Undrilled - No Grommet

Matching Covers

DETAIL	B1400	B2200	B1824
Single Hole Poly Cover	C14WPE		
Poly Economy Slotted Cover		C18LPN	C18LPN
14g Solid Steel Cover+		C18WSL	C18WSL
14g Simplex Steel Cover		C18SS	C18SS
14g 2-1/2" Single Hole Steel Cover+			C18WSE
2-Piece 14g Simplex Steel Cover		C18TS	
12g Simplex Steel Cover (1) Pump Access Plate			
Solid Non-Skid Fiberglass Cover		C18WFNSTP	C18WFNSTP
Simplex Non-Skid Fiberglass Cover		C18FSNSTP	C18FSNSTP
E-Series Slotted Foam Cover		E-C18SLOT	E-C18SLOT
E-Series Solid Foam Cover		E-C18EWSF	E-C18EWSF
E-Series Single Hole Foam Cover		E-C18EWSFE	E-C18EWSFE
E-Series Simplex Foam Cover-2X2 Grom		E-C18G-2	E-C18G-2
E-Series Simplex Foam Cover-2X3 Grom		E-C18G-3	E-C18G-3
E-Series Simplex Foam Cover w/Flanges		E-C18F	E-C18F
E-Series Simplex Two-Piece Foam Cover		E-C18TSF	E-C18TSF

NOTES

+ Includes hardware pack (bolts, washers and gasket tape)

* Includes hardware pack, discharge, vent and ECG
^ (2) 5" ID holes drilled
10-1/2" down CL-180° apart

Poly Basins

Standard Features

- Designed specifically for long-term reliability with extreme economy in mind
- Manufactured using the highest grade of polyethylene
- Offering years of trouble-free and quality performance
- True Radon protection
- Cover Options



18" x 30" Poly Basin

B2400
30 US Gallons Capacity
Undrilled - No Grommet

24" x 24" Poly Basin

B3100
43 US Gallons Capacity
Undrilled - No Grommet

24" x 30" Poly Basin

B3300
40 US Gallons Capacity
Undrilled - No Grommet

24" x 36" Poly Basin

B3200
65 US Gallons Capacity
Undrilled - No Grommet

Matching Covers

DETAIL	B1400	B2200	B1824	B3200
Simplex Steel Cover*	C18SS	C24SSL	C24SSL	C24SSL
2-Piece 14g Simplex Steel Cover	C18TS			
12g Simplex Steel Cover (1) Pump Access Plate		C24-12SSA	C24-12SSA	C24-12SSA
Solid Non-Skid Fiberglass Cover	C18WFNSTP	C24WFNSTP	C24WFNSTP	C24WFNSTP
Simplex Non-Skid Fiberglass Cover	C18FSNSTP	C24FSNSTP	C24FSNSTP	C24FSNSTP
E-Series Slotted Foam Cover	E-C18SLOT			
E-Series Solid Foam Cover	E-C18EWSF	E-C24EWSF	E-C24EWSF	E-C24EWSF
E-Series Single Hole Foam Cover	E-C18EWSFE	E-C24EWSFE	E-C24EWSFE	E-C24EWSFE
E-Series Simplex Foam Cover-2X2 Grom	E-C18G-2	E-C24G-2	E-C24G-2	E-C24G-2
E-Series Simplex Foam Cover-2X3 Grom	E-C18G-3	E-C24G-3	E-C24G-3	E-C24G-3
E-Series Simplex Foam Cover w/Flanges	E-C18F	E-C24F	E-C24F	E-C24F
E-Series Simplex Two-Piece Foam Cover	E-C18TSF			

Side-Vent Basins



DETAIL	Vent Size	18" x 22"	18" x 30"	23" x 31"
Gallon Size		22	30	65
Undrilled - No Grommet	2"	B2200SV-2	B2400SV-2	B2700SV-2
w/4" Grommet Hub - Inlet Undrilled	2"	B22003SV-2	B24002SVUD-2	B27002SVUD-2
Undrilled - No Grommet	3"	B2200SV-3	B2400SV-3	B2700SV-3

- Developed with the sole purpose of ease of maintenance -- Intact pipe vent means no more cutting and repairing for regular pump maintenance
- The 23 x 31 offers 50% more volume than the industry standard 18 x 30 basin

Matching Covers

DETAIL	Vent Size	18" x 22"	18" x 30"	23" x 31"
14g Simplex Steel Cover*	2" or 3"	E-C18GSV	C18SSSV	C27SSSV
E-Series Simplex Foam Cover	2" or 3"		E-C18GSV	

NOTES

+ Includes hardware pack (bolts, washers and gasket tape)

* Includes hardware pack, discharge, vent and ECG

^ (2) 5" ID holes drilled 10-1/2" down CL-180° apart

Rolled Top Basins



DETAIL	B2400RT	B4100RT	B5100RT
Size	30	103	154
Gallon Size	18" x 30"	30" x 36"	36" x 36"

- Design dramatically reduces service time for pump maintenance
- Undrilled - No Grommet

Matching Covers

DETAIL	B2400RT	B4100RT	B5100RT
14g Simplex Steel Cover	C18SS		
12g Simplex Steel Cover (1) Pump Access Plate*		C30-12SSA	C36-12SS
12g Duplex Steel Cover (2) Pump Access Plate*		C30-12DSA	C36-12DSA
Solid Non-Skid Fiberglass Cover		C18WFNSTP	C30WFNSTP
Simplex Non-Skid Fiberglass Cover		C18FSNSTP	C30FSNSTP
E-Series Slotted Foam Cover	E-C18SLOT		
E-Series Solid Foam Cover	E-C18EWSF		
E-Series Single Hole Foam Cover	E-C18EWSFE		
E-Series Simplex Foam Cover-2X2 Grom	E-C18G-2		
E-Series Simplex Foam Cover-2X3 Grom	E-C18G-3		
E-Series Simplex Foam Cover w/Flanges	E-C18F		
E-Series Simplex Two-Piece Foam Cover	E-C18TSF		

NOTES

+ Includes hardware pack (bolts, washers and gasket tape)

* Includes hardware pack, discharge, vent and ECG

^ (2) 5" ID holes drilled 10-1/2" down CL-180° apart

Recessed Rolled Top Basins

DETAIL	B2200RRT	B1824RRT	B2400RRT	B2400RRTS
Size	22	24	30	30
Gallon Size	18" x 22"	18" x 22"	18" x 30"	18" x 30"

- Manufactured with the highest grade of polyethylene
- Recessed rolled top flange offers extra strength and ease of installation
- Covers fit flush with encapsulated threaded cover bolt
- Offering years of trouble-free and quality performance



DETAIL	B3100RRT	B3300RRT	B3200RRT
Size	43	54	65
Gallon Size	24" x 24"	24" x 30"	24" x 36"

NOTES

+ Includes hardware pack (bolts, washers and gasket tape)

* Includes hardware pack, discharge, vent and ECG

^ (2) 5" ID holes drilled 10-1/2" down CL-180° apart

Matching Covers

DETAIL	B2200RRT	B1824RRT	B2400RRT	B2400RRTS
14g Solid Steel Cover*	C18WSL	C18WSL		
14g Simplex Steel Cover*	C18SS	C18SS	C18SS	C18SS
2-Piece 14g Simplex Steel Cover*	C18TS	C18TS	C18TS	C18TS
12g Simplex Steel Cover (1) Pump Access Plate*			C24-12SSA	
12g Duplex Steel Cover (2) Pump Access Plate*			C30-12DSA	
Solid Non-Skid Fiberglass Cover	C18WFNSTP	C18WFNSTP	C18WFNSTP	C18WFNSTP
Simplex Non-Skid Fiberglass Cover	C18FSNSTPP	C18FSNSTP	C18FSNSTP	C18FSNSTPP
E-Series Slotted Foam Cover	E-C18SLOT	E-C18SLOT	E-C18SLOT	E-C18SLOT
E-Series Solid Foam Cover	E-C18EWSF	E-C18EWSF	E-C18EWSF	E-C18EWSF
E-Series Single Hole Foam Cover	E-C18EWSFE	E-C18EWSFE	E-C18EWSFE	E-C18EWSFE
E-Series Simplex Foam Cover-2X2 Grom	E-C18G-2	E-C18G-2	E-C18G-2	E-C18G-2
E-Series Simplex Foam Cover-2X3 Grom	E-C18G-3	E-C18G-3	E-C18G-3	E-C18G-3
E-Series Simplex Foam Cover w/Flanges	E-C18F	E-C18F	E-C18F	E-C18F
E-Series Simplex Two-Piece Foam Cover	E-C18TSF	E-C18TSF	E-C18TSF	E-C18TSF

DETAIL	B3100RRT	B1824RRT	B2400RRT
14g Simplex Steel Cover*	C24SSL	C24SSL	C24SSL
12g Simplex Steel Cover (1) Pump Access Plate*	C24-12SSA	C24-12SSA	C24-12SSA
Solid Non-Skid Fiberglass Cover	C24WFNSTP	C24WFNSTP	C24WFNSTP
Simplex Non-Skid Fiberglass Cover	C24FSNSTP	C24FSNSTP	C24FSNSTP
E-Series Solid Foam Cover	E-C24EWSF	E-C24EWSF	C24EWSF
E-Series Single Hole Foam Cover	E-C24EWSFE	E-C24EWSFE	E-C24EWSFE
E-Series Simplex Foam Cover-2X2 Grom	E-C24G-2	E-C24G-2	E-C24G-2
E-Series Simplex Foam Cover-2X3 Grom	E-C24G-3	E-C24G-3	E-C24G-3
E-Series Simplex Foam Cover w/Flanges	E-C24F	E-C24F	E-C24F

Super Blue Basins

- Twice the Thickness
- Twice the weight
- Flagship poly basin
- More durable than structural foam
- Easier to work with than fiberglass



18" x 24" Super Blue Basin

SHDB240

Undrilled - No Grommet

18" x 30" Super Blue Basin

SHDB300

Undrilled - No Grommet

NOTES

+ Includes hardware pack (bolts, washers and gasket tape)

* Includes hardware pack, discharge, vent and ECG

^ (2) 5" ID holes drilled 10-1/2" down CL-180° apart

Matching Covers

DETAIL	SHDB240	SHDB300
14g Simplex Steel Cover*	C18SS	C18SS
Solid Non-Skid Fiberglass Cover	C18WFNSTP	C18WFNSTP
Simplex Non-Skid Fiberglass Cover	C18FSNSTP	C18FSNSTP
E-Series Slotted Foam Cover	E-C18SLOT	E-C18SLOT
E-Series Solid Foam Cover	E-C18EWSF	E-C18EWSF
E-Series Single Hole Foam Cover	E-C18EWSFE	E-C18EWSFE
E-Series Simplex Foam Cover-2X2 Grom	E-C18G-2	E-C18G-2
E-Series Simplex Foam Cover-2X3 Grom	E-C18G-3	E-C18G-3
E-Series Simplex Foam Cover w/Flanges	E-C18F	E-C18F
E-Series Simplex Two-Piece Foam Cover	E-C18TSF	E-C18TSF

Poly Extension

DETAIL	18x4	18x12
Poly Extension	SHDB1806E	SHDB1812E

Poly Extensions

POLY EXTENSIONS	18" X 6"	18" X 12"	24" X 6"	24" X 12"
Recessed Roll Top Poly Extensions+	B1806EXT	B1812EXT	B2406EXT	B2412EXT
Standard Poly Extensions	E-1806EXT	E-1812EXT		



- Quickly increase your basin height and help prevent debris from entering basin during installation
- Provide a flush surface when you assemble the cover

NOTES

+ Includes hardware pack (bolts, washers and gasket tape)

* Includes hardware pack, discharge, vent and ECG

^ (2) 5" ID holes drilled 10-1/2" down CL-180° apart

Corrugated Wall Basins

CORRUGATED BASINS	18" X 24"	18" X 30"	16" X 24"
US Gallons	26	34	22
Basin Only	B2300GT	B2400GT	B2500GT
Weight	7 LB	9 LB	7 LB

- 8 inserts included in the flange to ensure gasket tight application
- Accepts most 18" TOPP Covers



Elevator Basin

ELEVATOR BASIN	18" X 22"	24" X 36"
US Gallons	22	24
Basin Only	B2200	B3200

COVERS	18" X 22"	24" X 36"
1/4" Thick Perforated Steel Cover*	C18ELE	C24ELE

- Economy elevator pit basin package designed for water runoff which helps keep the environment safe.
- Cover provided with discharge flange and ECG.
- Specify basin size for composite hubs, fiberglass sleeves
- Elevator Basin increases pump performance



Ultra Poly Basin

24" x 24" Ultra Poly Basin

B2424

COVERS & GROMMETS	B2424
14g Simplex Steel Cover *	C18SS
Simplex Non-Skid Fiberglass Cover*	C18FSNSTP
E-Series Simplex Foam Cover-2X2 Grom	E-C18G-2
E-Series Simplex Foam Cover-2X3 Grom	E-C18G-3

- Unique design gives added support to a shallow clearance
- High capacity Poly Basin
- Compatible with all our 18" covers.
- Heavy duty version available
- 4 x 4 & 4 x 3 flexible coupling



Topp Capp

- Constructed of durable, weatherproof and corrosion resistant polyethylene resin
- 6" raised above ground to eliminate fluid resting on top
- Gas and water tight with appropriate seals
- Appropriate for use in home applications, as well as outdoors
- Can be shipped UPS or common carrier



DETAIL	Basin Fit	Outside Diameter	Insert Diameter	Cover Diameter	Weight
TOPCAP024	24	28	21.5"	18	5 LB
TOPCAP030	30	34	28.0	24	6 LB
TOPCAP036	36	40	34.0	30	7 LB
TOPCAP042	42	46	40.0	36	9 LB
TOPCAP048	48	54	46.0	42	12 LB

Low Pro Sump & Sewage Basins

- Rotationally molded with high quality polyethylene material
- Unique, low profile shape is perfect for those challenging areas that are difficult to fit a traditional shaped basin into
- Durable, lightweight and holds extensive volume of liquid



DETAIL	Outside Dia.	Height	Cover Dia.	US Gallons
LOPRO024	28	13-3/8	21	23.5
LOPRO030	34	12-5/8	28	36.5
LOPRO036	40	12-5/8	34	51.5
LOPRO042	46	12-5/8	40	68.0
LOPRO048	40	12-5/8	46	90.0

Triple Garage Basins

- Designed to help garage areas and other facilities handle generated volatile waste
- Separates volatile wastes as it passes through the system of baffles and rises to the surface
- Meets IL code
- Includes three black epoxy-coated 14g Solid Steel covers, composite inlet hub and discharge



POLY TRIPLE GARAGE BASIN	18" X 39"
Vents on the North Side	B1839TN
Vents on the South Side*	B1839TSR

Basin Covers

14G SOLID STEEL COVERS	18"	24"
Basins+	C18WSL	C24WSL
Weight	8 lbs	12 lbs



NOTES

+ Includes hardware pack (bolts, washers and gasket tape)

* Includes hardware pack, discharge, vent and ECG

^ (2) 5" ID holes drilled 10-1/2" down CL-180° apart

1/4" THICK SOLID STEEL COVERS	18"	24"	30"	36"
Basins+	C18WSH	C24WSH	C30WS	C36WS
Weight	23 lbs	48 lbs	65 lbs	90 lbs



SLOTTED POLYETHYLENE COVERS	14"	18"
Structural Foam Finger Slot Cover	C14WPE	
Fits 18" Corrugated Basins	C23SLP	
Economy Slotted for 18" Basins	C18LPN	
E-Series Slotted Foam Cover	E-C18SLOT	



- Engineered for quick cover installation and removal
- Designed for pedestal pumps and for non-radon sump basins

SOLID STRUCTURAL FOAM COVER	18"
For 18" ID Basins+	E-C18EWSF



SINGLE HOLE COVERS	18"
Steel Cover for 18" Basin+	C18WSE
Structural Foam Cover+	E-C18EWSFE



SOLID FIBERGLASS COVERS	18"	24"	30"	36"
Solid Non-Skid Fiberglass Cover+	C18WFNSTP	C24WFNSTP	C24WFNSTP	C24WFNSTP
Thickness			1/2"	1/2"
Weight			29 lbs	40 lbs



- Engineered for quick cover installation and removal
- Designed for pedestal pumps and for non-radon sump basins

Basin Covers

CLEARVIEW SUMP & SEWAGE COVER

18"

For 18" ID Basins*

C18-PC

- Shatter proof molded polycarbonate
- Available in 5 different configurations



ELEVATOR COVERS

18"

24"

1/4" thick Perforated Steel*

C18ELE

C24ELE

- Designed for water run-off to help keep the environment safe



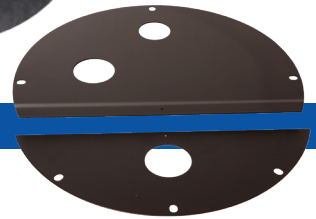
TWO-PIECE SIMPLEX STEEL COVER

18"

For 18" ID Basins*

C18TS

- Provides a quicker access to your pump
- Never cut vent pipe with this epoxy-coated cover



SIMPLEX NON-SKID FIBERGLASS COVER

18"

24"

30"

36"

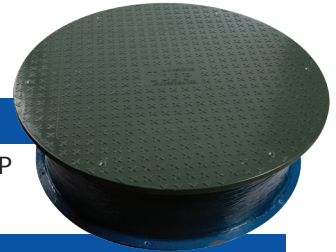
Simplex Non-Skid Fiberglass Cover*

C18FSNSTP

C24FSNSTP

C30FSNSTP

C36FSNSTP



SIMPLEX STEEL COVERS

18"

23"

24"

14g Steel*

C18SS

C24SSL

Weight

8 lbs

14 lbs

1/4" Thick*

C18SSH

C24SSH

Weight

23 lbs

50 lbs

14g for ID Side-Vent Basins#

C18SSV

C27SSSV

Weight

8 lbs

12 lbs

- Epoxy coating provides a tough and durable surface



SIMPLEX STEEL COVERS WITH ACCESS PLATE

24"

30"

36"

12g Steel Basins*

C24WSH

C30WS

C36WS

Weight

40 lbs

40 lbs

70 lbs

- 4-bolt pump access plate offers ease in the basin or pump installation and removal
- Blank inspection plate provides quicker access for pump inspection



DUPLEX STEEL COVER W/ ACCESS PLATE

30"

36"

12g Steel Basins*

C30WS

C36WS

Weight

44 lbs

75 lbs

- Includes two pump access plates to aid pump installation and removal
- Blank inspection plate provides quicker access for pump inspection



Accessories



Rubber Sleeve Full Flow Swing Check Valves

1-1/4" - 1-1/2" Combination CVSUMPR / 2" CV200R

- Engineered to increase performance
- Easy installation

Clear View Check Valves

1-1/4" - 1-1/2" Combo CVSUMPR-C / 2" CVR200R-C

- Shatter proof molded polycarbonate
- Inspect with ease

Threaded Check Valve

1-1/4" E-CV125 / 1-1/2" E-CV150

- Screws directly into the pump

Torque Stop

TS1830

- Generic Pump Configuration for 18" x 30" Basins
- Prevents pump rotation
- Protects the basin bottom with this 1/8" drop-in polyethylene torque stop

2" Ball/Check Valve Combo

BCX-2000-S

- One-piece ball/check valve combination with a true union design
- Allows removal of check valve for cleaning or repairs

Solvent Weld Pvc Check Valve

CV200TU

- Full flow design
- No metallic parts, corrosion resistant
- Angle seat and weighted flapper design for low pressure seal
- Ideal for close working areas
- Easy pipe alignment
- Designed for both horizontal and vertical usage

29" Discharge Pipe

2" SCH 40 PVC DP200P4 / 2" SCH 80 PVC DP200P8

- Add this SCH40 or SCH80 discharge pipe to your order and provide a job ready pack

Compression Nut Pvc Swing Check Valves

1-1/4" - 1-1/2" Combination - CVSUMPC / 2" - CV200C

- Easy installation and removal with compression seal connections

Accessories



Multi-Tite Hub

Pipe seal for 4" piping H400MTH

- A sure seal with Cast Iron Soil Pipe (service weight)



Grommet Hub

Pipe seal for 4" piping through a 5" hole -H400R

Pipe Seal for 4" SRD 35 piping through a 5" hole - H400R35

- Pipe seal for 4" piping
- Piping will penetrate about 1-3/4" and stop
- State of Illinois Approved

CAST IRON CAULKING INLET HUB	PIPING 2	3	4
Curved Back Cast Iron Hub	H200C	H300C	H400C
Curved Back Cast Iron Hub on 18" Basins			H400C-18
Flat Back Cast Iron Hub			H400F



- Industrial enamel coated bolt-on cast iron inlet hub

COMPOSITE HUBS	PIPING 4
2" Fiberglass Hub	H201FG
3" Fiberglass Hub	H301FG
4" Fiberglass Hub	H401FG
Flat-back Fiberglass	H400FGFLAT



- Fiberglass composite bolt-on hubs

Accessories



GROMMETS

For 1¼" Piping (OD) Through 3" Hole	G125
For 1½" Piping (OD) Through 3" Hole	G150
For 2" Piping (OD) Through 3" Hole	G200
For 3" Piping (OD) Through 4" Hole	G300
For 4" Piping (OD) Through 5" Hole	G400
For SDR35 4" Piping (OD) Through 5" Hole	G400SDR35
Electric Cord Grommet, Seals up to 3 Cords (up to 3/8" OD) Through a 2½" Hole	ECG
Electric Cord Grommet, Through a 2" Hole	ECG200
Electric Cord Plug 1" Hole	ECP
Electric Cord Plug 2" Hole	ECP
Electric Cord Plug 2.5" Hole ECP Flat-back Fiberglass	H400FGFLAT

- Fiberglass composite bolt-on hubs



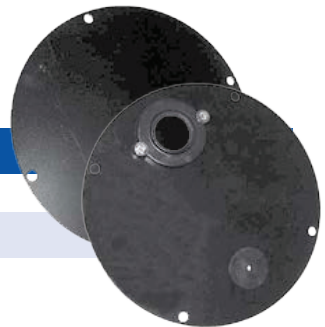
PLASTIC 2-BOLT PIPE FLANGE

	PIPING 1-1/4"	1-1/2"	2"	3"
Plastic 2-Bolt Slip Flange, with O-Ring	PF125S	PF150S	PF200S	PF300S
Plastic 2-Bolt Threaded Flange			PF200T	PF300T
Blank Plastic Flange			PF200B	

- Corrosion resistant threaded vent and slip discharge flanges

ACCESS PLATES - 12 GAUGE

	16"	18"
Blank Pump Access Plate+	16BPA-12	18BPA-12
Pump Access Plate with ECG Grommet & Discharge Flange+	16PA-12	18PA-12



- Epoxy coated 12-gauge steel for easier pump installation and removal

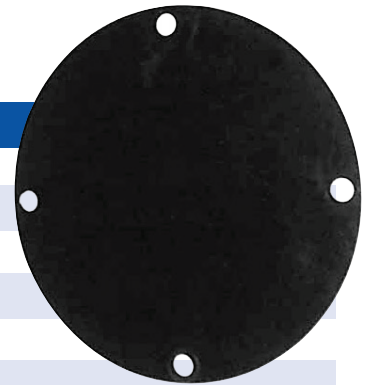
ACCESS PLATES - 1/4" THICK

	16"	18"	22"	28"
Blank Pump Access Plate+	16BPA-25	18BPA-25	22BPA-25	28BPA-25
Pump Access Plate with ECG Grommet & Discharge Flange+	16PA-25	18PA-25	22PA-25	28PA-25

- Epoxy coated 1/4" steel for easier pump installation and removal

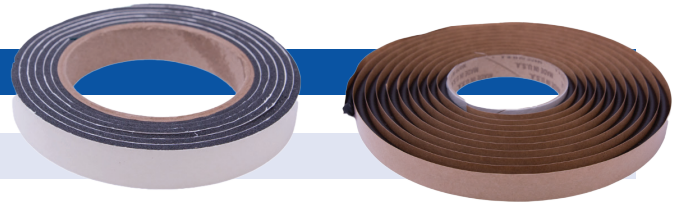
Accessories

INSPECTION PLATES	12 GAUGE	1/4" THICK
10" Blank Inspection Plate+	IN00-12	IN00-25
10" Inspection Plate, w/One 1/2" Cord Grip+	IN01-12	IN01-25
10" Inspection Plate, w/Two 1/2" Cord Grip+	IN02-12	IN02-25
10" Inspection Plate, w/Three 1/2" Cord Grip+	IN03-12	IN03-25
10" Inspection Plate, w/Four 1/2" Cord Grip+	IN04-12	IN04-25
1" Steel Float Pole Coupling Welding Under Inspection Plate	FP100E	



- 10" diameter for an 8" clear access opening

GASKET MATERIAL	
Foam Tape Seal - 1/8" x 3/4" x 6'	CGM06F
Butyl Tape Seal - 3/8" x 15'	CGM15B



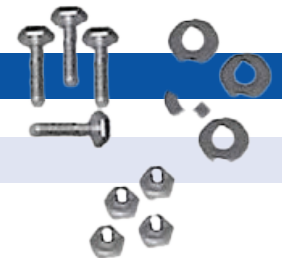
- Replacement cover gasket material for gas-tight and water-tight seals

ELECTRIC CORD GRIPS	
1/2" NPT, Seals Cords from 1.006" to 1.002" OD	GRIP050
2/4" NPT, Seals Cords from 1.001" to 1.008" OD	GRIP075
1" NPT, Seals Cords from 1.006" to 2.004" OD	GRIP100



- Easily adjust your power cord without entering the basin

BOLTS AND WASHERS	
1/4" -20 x 11/4" Bolts (6), 1/4" - 20 Washers (6)	HP1420
5/16 -18 x 11/4" Bolts (6), 5/16 -18 Washers (6)	HP516
3/8 -16 x 111/4 4" Bolts (6), 3/8 -16 Washers (6)	HP38



- Replacement stainless steel hardware packs for Topp Industries covers

POLYETHYLENE BAFFLES LENGTH	12"	18"	24"	36"	48"
Inlet Baffle, 8" Wide x 4" Deep	PIB12	PIB18	PIB24	PIB36	PIB48



- Easily adjust your power cord without entering the basin

Uniseal



- A Positive Pipe-to-Tank Seal for Flat or Curved Surfaces
- Seals are designed for holding tanks but work well in any application where pipe penetrations are required
- Perfect for hydroponic growers, pond suppliers, and reef and marine industries. Other applications include wastewater lift stations, valve boxes, sump risers, pump stations, dispenser pans, junction boxes cooling systems and boats
- UNISEAL PIPE SEALS quickly create a secure watertight seal without any adhesive, hardware or threads and can be used through the walls of any container or filter box
- A lubricant is also available to ease the installation of UNISEAL PIPE SEALS and is used to coat the interior surface of the UNISEAL PIPE SEALS and the exterior of the pipe
- An adhesive for a petroleum resistant bond between the UNISEAL PIPE SEALS and fiberglass, polyethylene and metals is also offered
- Models available for accommodating 3/8" piping (through 1" hole) up to 6" piping (through 7" hole)
- Easy installation
- Tough, pliable thermoplastic material. Excellent resistance to most chemical compounds, petroleum products, methanol, ethanol and most soil compounds
- Ideal for use with PVC, galvanized steel, copper, EMT, rigid conduit, fiberglass and polyethylene pipe

UNISEAL - THROUGH HOLE	1"	1-1/4"	1-3/4"	2"	2-1/2"
Pipe Seal for 3/8" Piping (.0675" OD)	U038				
Pipe Seal for 1/2" Piping (.0840" OD)		U050			
Pipe Seal for 3/4" Piping (2.000" OD)		U075			
Pipe Seal for 1" Piping (2.005" OD)			U100		
Pipe Seal for 1 1/4" Piping (2.000" OD)				U125	
Pipe Seal for 1 1/2" Piping (2.000" OD)					U150
Electric Cord Grommet, Seals up to 3 cords			UECG		

UNISEAL - THROUGH HOLE	3"	4"	5"	5-1/2"	7"
Pipe Seal for 2" Piping (3.005" OD)	U200				
Pipe Seal for 2" Piping (SDR35 Pipe)	U200-35				
Pipe Seal for 1 1/4" Piping (2.000" OD)	U200-125				
Pipe Seal for 1 1/2" Piping (2.000" OD)	U200-150				
Pipe Seal for 3" Piping (4.000" OD)		U300			
Pipe Seal for 2" Piping (3.005" OD)		U320			
Pipe Seal for Piping w/a 4.000" OD			U390		
Pipe Seal for 4" Piping (5.000" OD)			U400		
Pipe Seal for 4" x SDR35 Piping (5.000" OD)			U400-35		
Pipe Seal for 3" Piping (4.000" OD)			U430		
Pipe Seal for Piping w/a 5.000" OD				U490	
Pipe Seal for Piping w/a 6.000" OD					U590
Pipe Seal for 6" Piping (7.005" OD)					U600
Pipe Seal for 6" x SDR35 Piping (7.009" OD)					U600-35



In 1988, Kevin Birchmeier had a vision of creating a quality product that consumers could not only trust, but rely on, for the best choice in economical and environmentally responsible sump, sewage and wastewater products. Getting its start out of a 500 square foot garage in Rochester, Indiana, TOPP Industries, Inc. was started from humble beginnings – and only a few employees. Since that time, TOPP has grown to an internationally recognized brand with over 130 employees and over 300,000 square feet of manufacturing space.

Highway 25 North

Rochester, IN 46975

Phone: 574-223-3681

Fax: 574-223-6106

Email: toppindustries@toppindustries.com

www.toppindustries.com

800-354-4534